

Anti-Cytokeratin 15 Rabbit Monoclonal Antibody

Catalog Number: M06791-1

About KRT15

Putative transcription factor involved in pancreas development and function.

Overview

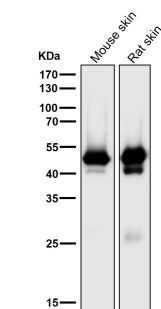
Product Name	Anti-Cytokeratin 15 Rabbit Monoclonal Antibody
Reactive Species	Human, Mouse, Rat
Description	Boster Bio Anti-Cytokeratin 15 Rabbit Monoclonal Antibody catalog # M06791-1. Tested in WB, IHC, ICC/IF, Flow Cytometry applications. This antibody reacts with Human, Mouse, Rat.
Application	Flow Cytometry, IF, IHC, ICC, WB
Clonality	Monoclonal DOB-11
Formulation	Rabbit IgG in phosphate buffered saline, pH 7.4, 150mM NaCl, 0.02% sodium azide and 50% glycerol, 0.4-0.5mg/ml BSA.
Storage Instructions	Store at -20°C for one year. For short term storage and frequent use, store at 4°C for up to one month. Avoid repeated freeze-thaw cycles.
Host	Rabbit
Uniprot ID	P19012

Technical Details

Immunogen	A synthesized peptide derived from human Cytokeratin 15
Isotype	Rabbit IgG
Form	Liquid
Concentration	Actual concentration vary by lot. Use suggested dilution ratio to decide dilution procedure.
Purification	Affinity-chromatography
Suggested Dilutions	<p>Dilute the sample so that the expected range of concentrations fall within the detection range of this kit.</p> <p>If the expected range of concentration is unknown, a pilot test should be conducted to decide the optimal dilution ratio for your samples.</p> <p>Some PubMed article(s) citing the expression level of this target are as follows:</p> <p>Boster Bio's internal QC testing used:</p> <p>WB 1:1000-1:2000</p> <p>IHC 1:50-1:200</p> <p>ICC/IF 1:50-1:200</p>

	FC 1:50
--	---------

Anti-Cytokeratin 15 Rabbit Monoclonal Antibody (M06791-1) Images



All lanes use the Antibody at 1:4K dilution for 1 hour at room temperature.

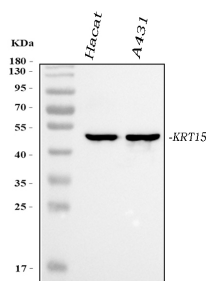


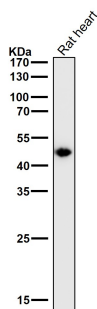
Figure 1. Western blot analysis of Cytokeratin 15 using anti-Cytokeratin 15 antibody (M06791-1).

Electrophoresis was performed on a 5-20% SDS-PAGE gel at 70V (Stacking gel) / 90V (Resolving gel) for 2-3 hours. The sample well of each lane was loaded with 30 ug of sample under reducing conditions.

Lane 1: human Hacat whole cell lysates,

Lane 2: human A431 whole cell lysates.

After electrophoresis, proteins were transferred to a nitrocellulose membrane at 150 mA for 50-90 minutes. Blocked the membrane with 5% non-fat milk/TBS for 1.5 hour at RT. The membrane was incubated with mouse anti-Cytokeratin 15 antigen affinity purified monoclonal antibody (Catalog # M06791-1) at 1:1000 overnight at 4°C, then washed with TBS-0.1%Tween 3 times with 5 minutes each and probed with a goat anti-mouse IgG-HRP secondary antibody at a dilution of 1:10000 for 1.5 hour at RT. The signal is developed using an Enhanced Chemiluminescent detection (ECL) kit (Catalog # EK1002) with Tanon 5200 system. A specific band was detected for Cytokeratin 15 at approximately 49 kDa. The expected band size for Cytokeratin 15 is at 49 kDa.



All lanes use the Antibody at 1:4K dilution for 1 hour at room temperature.

2 Publications Citing This Product

1. PubMed ID: 22211239, Yin D, Tian L, Ye Y, Li K, Wang J, Cheng P, Chen A, Guo F, Huang H. Int J Mol Med. 2012 Apr;29(4):587-92. Doi: 10.3892/ijmm.2011.871. Epub 2011 Dec 29. Nanog And ??-Catenin: A New Convergence Point In EpSC Proliferation And Differentiation.

2. PubMed ID: 24311896, The Role of EGFR/PI3K/Akt/cyclinD1 Signaling Pathway in Acquired Middle Ear Cholesteatoma

Visit bosterbio.com/anti-cytokeratin-15-rabbit-monoclonal-antibody-m06791-1-boster.html to see all 2 publications.

Submit a product review to Biocompare.com

Submit a review of this product to Biocompare.com to receive a \$20 Amazon.com giftcard! Your reviews help your fellow scientists make the right decisions. Thank you for your contribution.



Anti-Cytokeratin 15 Rabbit Monoclonal Antibody