

## Anti-Trimethyl-Histone H3 (Lys4) H3F3A Rabbit Monoclonal Antibody, Clone#RM340

Catalog Number: M06819-2

### Overview

Product Name	Anti-Trimethyl-Histone H3 (Lys4) H3F3A Rabbit Monoclonal Antibody, Clone#RM340
Reactive Species	Human, Vertebrates
Description	Boster Bio Anti-Trimethyl-Histone H3 (Lys4) H3F3A Rabbit Monoclonal Antibody, Clone#RM340 (Catalog # M06819-2). Tested in ChIP, ELISA, Luminex applications. This antibody reacts with Human, Vertebrates.
Application	ChIP, ELISA, Luminex
Clonality	Monoclonal RM340
Formulation	50% Glycerol/PBS with 1% BSA and 0.09% sodium azide
Storage Instructions	Store at -20°C for one year. Avoid repeated freeze-thaw cycles.
Host	Rabbit
Uniprot ID	P84243

### Technical Details

Immunogen	A trimethyl-peptide corresponding to Trimethyl-Histone H3 (Lys4)
Cross Reactivity	This antibody reacts to Histone H3 trimethylated at Lysine 4 (K4me3). No cross-reactivity with monomethylated Lysine 4 (K4me1) or dimethylated Lysine 4 (K4me2), or other methylation in histone H3.
Isotype	Rabbit IgG
Form	Liquid
Concentration	1 mg/mL
Purification	Protein A affinity purified from an animal origin-free culture supernatant
Suggested Dilutions	<p>Dilute the sample so that the expected range of concentrations fall within the detection range of this kit.</p> <p>If the expected range of concentration is unknown, a pilot test should be conducted to decide the optimal dilution ratio for your samples.</p> <p>Some PubMed article(s) citing the expression level of this target are as follows:</p> <p>Boster Bio's internal QC testing used:</p> <p>Chromatin IP: 1 ug/mL – 5 ug/mL</p> <p>ELISA: 1 ug/mL – 10 ug/mL</p> <p>Luminex: 0.5 ug/mL – 2 ug/mL.</p>



## Anti-Trimethyl-Histone H3 (Lys4) H3F3A Rabbit Monoclonal Antibody, Clone#RM340 (M06819-2) Images

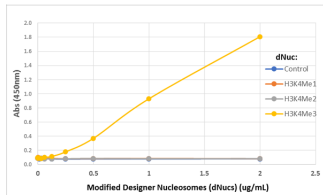


Figure 1. ELISA result showing specificity ELISA of Designer Nucleosomes (dNucs) (Recombinant Human Nucleosome with H3 K4 Modified), using anti-H3K4me3 rabbit monoclonal antibody clone RM340 (10 g/mL).

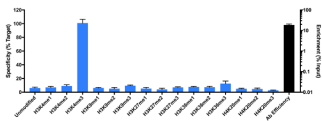


Figure 2. ChIP result SNAP-ChIP TM / qPCR using anti-H3K4me3 rabbit monoclonal antibody clone RM340. Antibody (3 g at 17 g/mL) was tested in native ChIP with 3 g HEK-293 chromatin (~1x10<sup>6</sup> cells). Specificity (left Y-axis)

### Submit a product review to Biocompare.com

Submit a review of this product to Biocompare.com to receive a \$20 Amazon.com giftcard! Your reviews help your fellow scientists make the right decisions. Thank you for your contribution.



Anti-Trimethyl-Histone H3 (Lys4) H3F3A Rabbit Monoclonal Antibody, Clone#RM340