

Anti-Monomethyl-Histone H3 (Lys4) H3F3A Rabbit Monoclonal Antibody, Clone#RM140

Catalog Number: M06819-3

Overview

Product Name	Anti-Monomethyl-Histone H3 (Lys4) H3F3A Rabbit Monoclonal Antibody, Clone#RM140
Reactive Species	Human, Vertebrates
Description	Boster Bio Anti-Monomethyl-Histone H3 (Lys4) H3F3A Rabbit Monoclonal Antibody, Clone#RM140 (Catalog # M06819-3). Tested in WB, ChIP, ICC, ELISA, Luminex applications. This antibody reacts with Human, Vertebrates.
Application	ChIP, ELISA, ICC, WB, Luminex
Clonality	Monoclonal RM140
Formulation	50% Glycerol/PBS with 1% BSA and 0.09% sodium azide
Storage Instructions	Store at -20°C for one year. Avoid repeated freeze-thaw cycles.
Host	Rabbit
Uniprot ID	P84243

Technical Details

Immunogen	A monomethyl-peptide corresponding to Monomethyl-Histone H3 (Lys4)
Cross Reactivity	This antibody reacts to Histone H3 monomethylated at Lysine 4 (K4me1). No cross-reactivity with dimethylated Lysine 4 (K4me2) or trimethylated Lysine 4 (K4me3), or other methylations in histone H3
Isotype	Rabbit IgG
Form	Liquid
Concentration	1 mg/mL
Purification	Protein A affinity purified from an animal origin-free culture supernatant
Suggested Dilutions	<p>Dilute the sample so that the expected range of concentrations fall within the detection range of this kit.</p> <p>If the expected range of concentration is unknown, a pilot test should be conducted to decide the optimal dilution ratio for your samples.</p> <p>Some PubMed article(s) citing the expression level of this target are as follows:</p> <p>Boster Bio's internal QC testing used:</p> <p>WB: 0.2 ug/mL - 1 ug/mL</p> <p>ChIP: 2 ug/mL- 10 ug/mL</p> <p>ICC: 1 ug/mL - 2 ug/mL</p>

	ELISA: 0.2 ug/mL - 1 ug/mL Luminex: 0.1 ug/mL - 0.5 ug/mL.
--	---

Anti-Monomethyl-Histone H3 (Lys4) H3F3A Rabbit Monoclonal Antibody, Clone#RM140 (M06819-3) Images

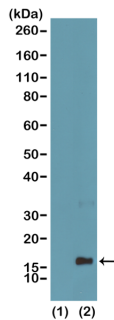


Figure 1. Western Blotting result
Western Blot of recombinant histone H3.3 (1) and acid extracts of HeLa cells (2), using RM140 at 0.5 ug/mL, showed a band of histone H3 monomethylated at Lysine 4 (K4me1) in HeLa cells.

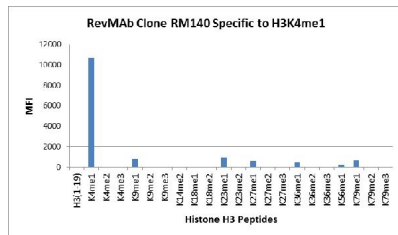


Figure 2. Specificity Test result
RM140 specifically reacts to Histone H3 monomethylated at Lysine 4 (K4me1). No cross reactivity with dimethylated Lysine 4 (K4me2), trimethylated Lysine 4 (K4me3), or other methylations in histone H3

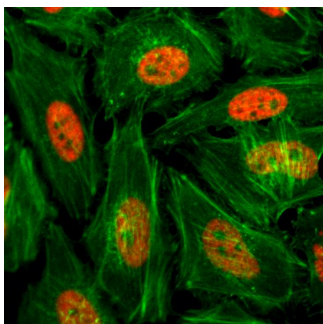


Figure 3. ICC result
Immunocytochemistry of HeLa cells, using Monomethyl-Histone H3 (Lys4) Rabbit mAb RM140 (red). Actin filaments have been labeled with fluorescein phalloidin (green).

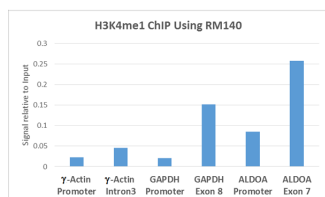


Figure 4. ChIP result
ChIP performed on HeLa cells using H3K4me1 antibody (RM140, 5ug). Real-time PCR was performed using primers specific to the gene indicated.

Submit a product review to Biocompare.com

Submit a review of this product to Biocompare.com to receive a \$20 Amazon.com giftcard! Your reviews help your fellow scientists make the right decisions. Thank you for your contribution.



Anti-Monomethyl-Histone H3 (Lys4) H3F3A Rabbit Monoclonal Antibody, Clone#RM140