

Anti-PSMC3 Mouse Monoclonal Antibody [Clone ID: OTI9F3]

Catalog Number: M07208

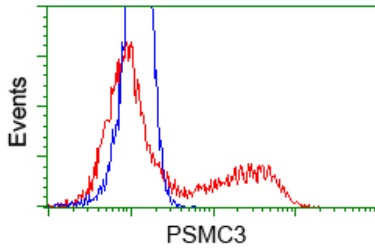
Overview

Product Name	Anti-PSMC3 Mouse Monoclonal Antibody [Clone ID: OTI9F3]
Reactive Species	Dog, Human, Mouse, Rat
Description	Boster Bio Anti-PSMC3 mouse monoclonal antibody, clone OTI9F3 (formerly 9F3). Catalog# M07208. Tested in FC, IF, IHC, WB. This antibody reacts with Human, Mouse, Rat, Dog.
Conjugate	Unconjugated
Application	Flow Cytometry, IF, IHC, WB
Clonality	Monoclonal OTI9F3
Formulation	PBS (pH 7.3) containing 1% BSA, 50% glycerol and 0.02% sodium azide.
Storage Instructions	Store at -20°C as received.
Host	Mouse
Uniprot ID	P17980

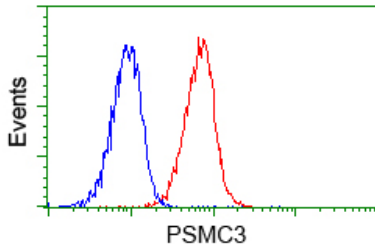
Technical Details

Immunogen	Full length human recombinant protein of human PSMC3 (NP_002795) produced in HEK293T cell.
Isotype	IgG1
Concentration	0.58 mg/ml
Purification	Purified from mouse ascites fluids or tissue culture supernatant by affinity chromatography (protein A/G)
Suggested Dilutions	Dilute the sample so that the expected range of concentrations fall within the detection range of this kit. If the expected range of concentration is unknown, a pilot test should be conducted to decide the optimal dilution ratio for your samples. Some PubMed article(s) citing the expression level of this target are as follows:

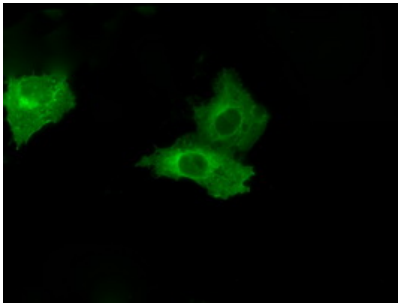
Anti-PSMC3 Mouse Monoclonal Antibody [Clone ID: OTI9F3] (M07208) Images



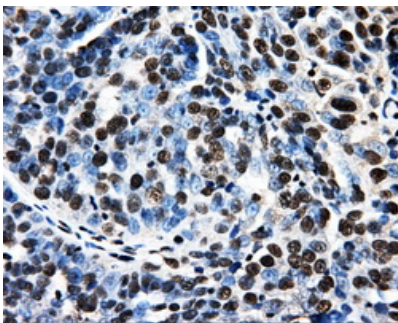
HEK293T cells transfected with either pCMV6-ENTRY PSMC3 (Red) or empty vector control plasmid (Blue) were immunostained with anti-PSMC3 mouse monoclonal (M07208)



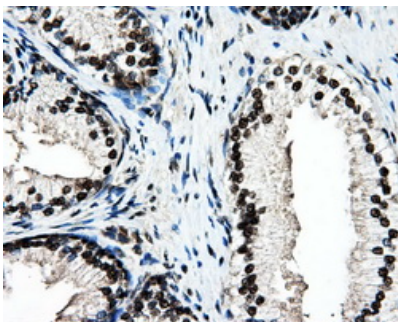
Flow cytometric analysis of Jurkat cells



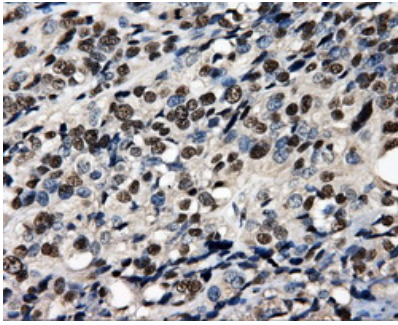
Anti-PSMC3 mouse monoclonal antibody (M07208) immunofluorescent staining of COS7 cells transiently transfected by pCMV6-ENTRY PSMC3.



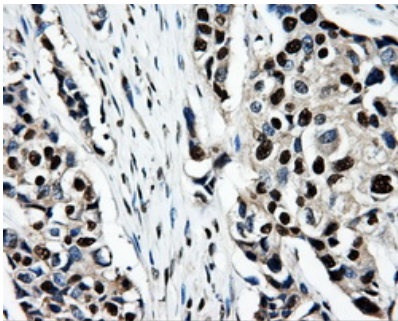
Immunohistochemical staining of paraffin-embedded Adenocarcinoma of ovary tissue using anti-PSMC3mouse monoclonal antibody. (Heat-induced epitope retrieval by 10mM citric buffer



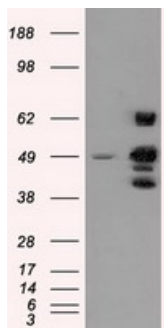
Immunohistochemical staining of paraffin-embedded prostate tissue within the normal limits using anti-PSMC3mouse monoclonal antibody. (Heat-induced epitope retrieval by 10mM citric buffer



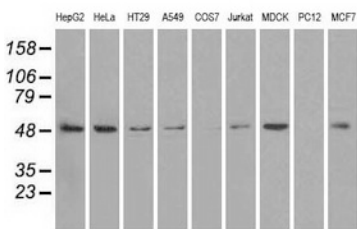
Immunohistochemical staining of paraffin-embedded Carcinoma of bladder tissue using anti-PSMC3 mouse monoclonal antibody. (Heat-induced epitope retrieval by 10mM citric buffer)



Immunohistochemical staining of paraffin-embedded Adenocarcinoma of breast tissue using anti-PSMC3 mouse monoclonal antibody. (Heat-induced epitope retrieval by 10mM citric buffer)



HEK293T cells were transfected with the pCMV6-ENTRY control (Left lane) or pCMV6-ENTRY PSMC3 (Right lane) cDNA for 48 hrs and lysed. Equivalent amounts of cell lysates (5 ug per lane) were separated by SDS-PAGE and immunoblotted with anti-PSMC3.



Western blot analysis of extracts (35ug) from 9 different cell lines by using anti-PSMC3 monoclonal antibody.

Submit a product review to Biocompare.com

Submit a review of this product to Biocompare.com to receive a \$20 Amazon.com giftcard! Your reviews help your fellow scientists make the right decisions. Thank you for your contribution.



Anti-PSMC3 Mouse Monoclonal Antibody [Clone ID: OT19F3]