

Anti-RIT2 Mouse Monoclonal Antibody [Clone ID: OTI4A6]

Catalog Number: M07833-1

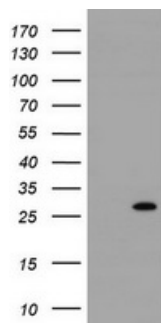
Overview

| | |
|----------------------|---|
| Product Name | Anti-RIT2 Mouse Monoclonal Antibody [Clone ID: OTI4A6] |
| Reactive Species | Human, Mouse, Rat |
| Description | Boster Bio RIT2 mouse monoclonal antibody, clone OTI4A6 (formerly 4A6). Catalog# M07833-1. Tested in WB. This antibody reacts with Human, Mouse, Rat. |
| Application | WB |
| Clonality | Monoclonal OTI4A6 |
| Formulation | PBS (PH 7.3) containing 1% BSA, 50% glycerol and 0.02% sodium azide. |
| Storage Instructions | Store at -20°C as received. |
| Host | Mouse |
| Uniprot ID | Q99578 |

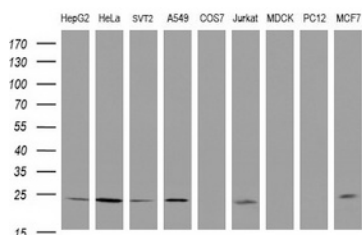
Technical Details

| | |
|---------------------|--|
| Immunogen | Full length human recombinant protein of human RIT2 (NP_002921) produced in HEK293T cell. |
| Isotype | IgG2a |
| Concentration | 1 mg/ml |
| Purification | Purified from mouse ascites fluids or tissue culture supernatant by affinity chromatography (protein A/G) |
| Suggested Dilutions | Dilute the sample so that the expected range of concentrations fall within the detection range of this kit. If the expected range of concentration is unknown, a pilot test should be conducted to decide the optimal dilution ratio for your samples. Some PubMed article(s) citing the expression level of this target are as follows: |

Anti-RIT2 Mouse Monoclonal Antibody [Clone ID: OTI4A6] (M07833-1) Images



HEK293T cells were transfected with the pCMV6-ENTRY control (Left lane) or pCMV6-ENTRY RIT2 (Right lane) cDNA for 48 hrs and lysed. Equivalent amounts of cell lysates (5 ug per lane) were separated by SDS-PAGE and immunoblotted with anti-RIT2.



Western blot analysis of extracts (35ug) from 9 different cell lines by using anti-RIT2 monoclonal antibody (HepG2: human; HeLa: human; SVT2: mouse; A549: human; COS7: monkey; Jurkat: human; MDCK: canine; PC12: rat; MCF7: human).

Submit a product review to Biocompare.com

Submit a review of this product to Biocompare.com to receive a \$20 Amazon.com giftcard! Your reviews help your fellow scientists make the right decisions. Thank you for your contribution.



Anti-RIT2 Mouse Monoclonal Antibody [Clone ID: OTI4A6]