

Anti-RIT2 Mouse Monoclonal Antibody [Clone ID: OTI1G2]

Catalog Number: M07833-2

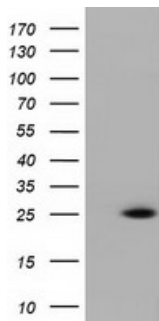
Overview

Product Name	Anti-RIT2 Mouse Monoclonal Antibody [Clone ID: OTI1G2]
Reactive Species	Human, Mouse, Rat
Description	Boster Bio Anti-RIT2 mouse monoclonal antibody, clone OTI1G2 (formerly 1G2). Catalog# M07833-2. Tested in FC, IF, WB. This antibody reacts with Human, Mouse, Rat.
Application	Flow Cytometry, IF, WB
Clonality	Monoclonal OTI1G2
Formulation	PBS (PH 7.3) containing 1% BSA, 50% glycerol and 0.02% sodium azide.
Storage Instructions	Store at -20°C as received.
Host	Mouse
Uniprot ID	Q99578

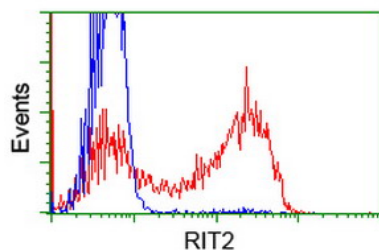
Technical Details

Immunogen	Full length human recombinant protein of human RIT2 (NP_002921) produced in HEK293T cell.
Isotype	IgG1
Concentration	0.69 mg/ml
Purification	Purified from mouse ascites fluids or tissue culture supernatant by affinity chromatography (protein A/G)
Suggested Dilutions	Dilute the sample so that the expected range of concentrations fall within the detection range of this kit. If the expected range of concentration is unknown, a pilot test should be conducted to decide the optimal dilution ratio for your samples. Some PubMed article(s) citing the expression level of this target are as follows:

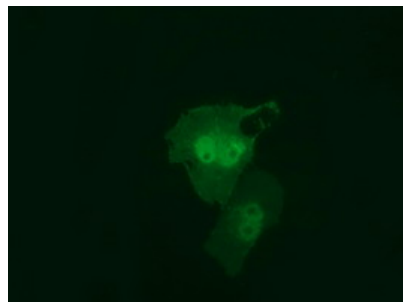
Anti-RIT2 Mouse Monoclonal Antibody [Clone ID: OTI1G2] (M07833-2) Images



HEK293T cells were transfected with the pCMV6-ENTRY control (Left lane) or pCMV6-ENTRY RIT2 (Right lane) cDNA for 48 hrs and lysed. Equivalent amounts of cell lysates (5 ug per lane) were separated by SDS-PAGE and immunoblotted with anti-RIT2.



HEK293T cells transfected with either RIT2 (Myc-DDK-tagged) overexpress plasmid (Red) or empty vector control plasmid (Blue) were immunostained by anti-RIT2 antibody (M07833-2)



Anti-RIT2 mouse monoclonal antibody (M07833-2) immunofluorescent staining of COS7 cells transiently transfected by pCMV6-ENTRY RIT2.

Submit a product review to Biocompare.com

Submit a review of this product to Biocompare.com to receive a \$20 Amazon.com giftcard! Your reviews help your fellow scientists make the right decisions. Thank you for your contribution.



Anti-RIT2 Mouse Monoclonal Antibody [Clone ID: OTI1G2]