

Anti-MAML3 (Mastermind Like Transcriptional Coactivator 3) Monoclonal Antibody

Catalog Number: M07975

About MAML3

MAML3 (mastermind-like protein 3) is a nuclear speckle protein that acts as a transcriptional coactivator for Notch receptors. The Notch signaling pathway influences cell fate by regulating the ability of precursor cells to properly respond to developmental signals. MAML3 is a member of the mastermind-like family of proteins that are human homologs of the *Drosophila melanogaster* mastermind protein. Through its N-terminal region, MAML3 interacts with the ankyrin repeats of the Notch proteins Notch 1, Notch 2, Notch 3 and Notch 4. This interaction leads to formation of a DNA-binding complex with the Notch proteins and RBP-J a complex that can then induce HES1 gene expression. While the N-terminal domain of MAML3 is essential for proper Notch binding, the C-terminal domain of MAML3 is essential for transcriptional activation. Due to its involvement in cell signaling and transcriptional activation, upregulation of MAML3 is thought to be involved in oncogenesis.

Overview

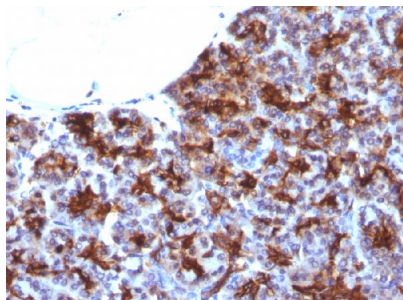
Product Name	Anti-MAML3 (Mastermind Like Transcriptional Coactivator 3) Monoclonal Antibody
Reactive Species	Human
Description	Boster Bio Anti-MAML3 (Mastermind Like Transcriptional Coactivator 3) Monoclonal Antibody (Catalog # M07975). Tested in IHC applications. This antibody reacts with Human.
Conjugate	Biotin
Application	IHC
Clonality	Monoclonal Clone: MAML3/1303
Formulation	Prepared in 10mM PBS with 0.05% BSA & 0.05% azide. Also available WITHOUT BSA & azide at 1.0mg/ml.
Storage Instructions	Antibody with azide - store at 2 to 8°C. Antibody without azide - store at -20 to -80°C. Antibody is stable for 24 months. Non-hazardous. No MSDS required.
Host	Mouse
Uniprot ID	Q96JK9

Technical Details

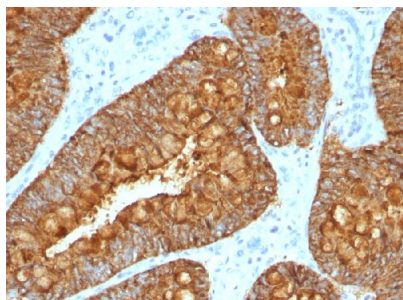
Immunogen	Recombinant human MAML3 protein fragment
Predicted Reactive Species	Pig, Rabbit
Cross Reactivity	Does not cross-react with primate, avian or amphibian GR.
Isotype	IgG1, kappa

Form	Liquid
Concentration	Purified antibody with BSA and azide at 200ug/ml
Purification	200ug/ml of antibody purified from Bioreactor Concentrate by Protein A/G.
Suggested Dilutions	<p>Dilute the sample so that the expected range of concentrations fall within the detection range of this kit.</p> <p>If the expected range of concentration is unknown, a pilot test should be conducted to decide the optimal dilution ratio for your samples.</p> <p>Some PubMed article(s) citing the expression level of this target are as follows:</p> <p>Boster Bio's internal QC testing used:</p> <p>Immunohistochemistry (Formalin-fixed) (1-2ug/ml for 30 minutes at RT)(Staining of formalin-fixed tissues is enhanced by heating tissue sections in 10mM Tris with 1mM EDTA, pH 9.0 for 45 min at 95&degC followed by cooling at RT for 20 minutes)Optimal dilution for a specific application should be determined.</p>

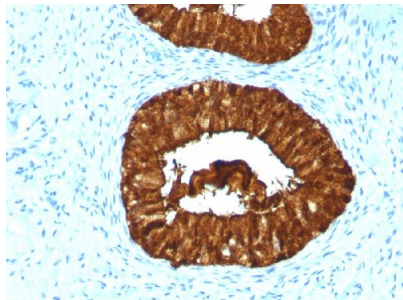
Anti-MAML3 (Mastermind Like Transcriptional Coactivator 3) Monoclonal Antibody (M07975) Images



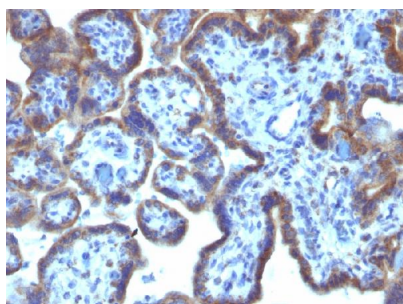
Formalin-fixed, paraffin-embedded human Pancreas stained with Anti-MAML3 Monoclonal Antibody (MAML3/1303).



Formalin-fixed, paraffin-embedded human Colon Carcinoma stained with Anti-MAML3 Monoclonal Antibody (MAML3/1303).



Formalin-fixed, paraffin-embedded human Cervical Carcinoma stained with Anti-MAML3 Monoclonal Antibody (MAML3/1303).



Formalin-fixed, paraffin-embedded human Placenta stained with Anti-MAML3 Monoclonal Antibody (MAML3/1303).

Submit a product review to Biocompare.com

Submit a review of this product to Biocompare.com to receive a \$20 Amazon.com giftcard! Your reviews help your fellow scientists make the right decisions. Thank you for your contribution.



Anti-MAML3 (Mastermind Like Transcriptional Coactivator 3) Monoclonal Antibody