

Anti-alpha Tubulin TUBA1B Rabbit Monoclonal Antibody

Catalog Number: M08382-1

About TUBA1B

Putative transcription factor involved in pancreas development and function.

Overview

Product Name	Anti-alpha Tubulin TUBA1B Rabbit Monoclonal Antibody
Reactive Species	Human, Mouse, Rat
Description	Boster Bio Anti-alpha Tubulin TUBA1B Rabbit Monoclonal Antibody catalog # M08382-1. Tested in WB, IHC, ICC/IF, IP, Flow Cytometry applications. This antibody reacts with Human, Mouse, Rat.
Application	Flow Cytometry, IP, IF, IHC, ICC, WB
Clonality	Monoclonal CG-20
Formulation	Rabbit IgG in phosphate buffered saline, pH 7.4, 150mM NaCl, 0.02% sodium azide and 50% glycerol, 0.4-0.5mg/ml BSA.
Storage Instructions	Store at -20°C for one year. For short term storage and frequent use, store at 4°C for up to one month. Avoid repeated freeze-thaw cycles.
Host	Rabbit
Uniprot ID	P68366

Technical Details

Immunogen	A synthesized peptide derived from human alpha Tubulin
Isotype	Rabbit IgG
Form	Liquid
Concentration	Actual concentration vary by lot. Use suggested dilution ratio to decide dilution procedure.
Purification	Affinity-chromatography
Suggested Dilutions	<p>Dilute the sample so that the expected range of concentrations fall within the detection range of this kit.</p> <p>If the expected range of concentration is unknown, a pilot test should be conducted to decide the optimal dilution ratio for your samples.</p> <p>Some PubMed article(s) citing the expression level of this target are as follows:</p> <p>Boster Bio's internal QC testing used:</p> <p>WB 1:1000-1:5000</p> <p>IHC 1:50-1:200</p> <p>ICC/IF 1:50-1:200</p>

	IP 1:50 FC 1:50
--	--------------------

Anti-alpha Tubulin TUBA1B Rabbit Monoclonal Antibody (M08382-1) Images

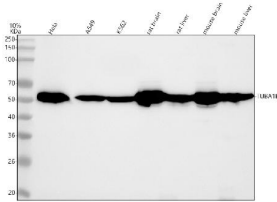
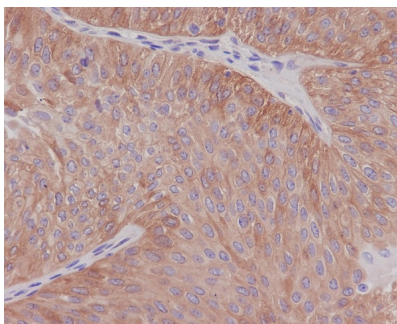


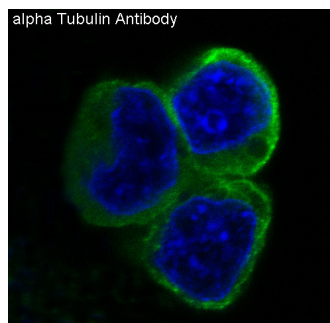
Figure 1. Western blot analysis of Alpha Tubulin using anti-Alpha Tubulin antibody (M08382-1). Electrophoresis was performed on a 5-20% SDS-PAGE gel at 70V (Stacking gel) / 90V (Resolving gel) for 2-3 hours. The sample well of each lane was loaded with 30 ug of sample under reducing conditions.

Lane 1: human Hela whole cell lysates,
Lane 2: human A549 whole cell lysates,
Lane 3: human K562 whole cell lysates,
Lane 4: rat brain tissue lysates,
Lane 5: rat liver tissue lysates,
Lane 6: mouse brain tissue lysates,
Lane 7: mouse liver tissue lysates.

After electrophoresis, proteins were transferred to a nitrocellulose membrane at 150 mA for 50-90 minutes. Blocked the membrane with 5% non-fat milk/TBS for 1.5 hour at RT. The membrane was incubated with rabbit anti-Alpha Tubulin antigen affinity purified monoclonal antibody (Catalog # M08382-1) at 1:1000 overnight at 4°C, then washed with TBS-0.1%Tween 3 times with 5 minutes each and probed with a goat anti-rabbit IgG-HRP secondary antibody at a dilution of 1:500 for 1.5 hour at RT. The signal is developed using an Enhanced Chemiluminescent detection (ECL) kit (Catalog # EK1002) with Tanon 5200 system. A specific band was detected for Alpha Tubulin at approximately 55 kDa. The expected band size for Alpha Tubulin is at 55 kDa.



Immunohistochemical analysis of paraffin-embedded human bladder, using alpha Tubulin Antibody.



Immunofluorescent analysis of 293 cells, using alpha Tubulin Antibody .

14 Publications Citing This Product

1. PubMed ID: 26269769, Endogenous Nodal promotes melanoma undergoing epithelial-mesenchymal transition via Snail and Slug in vitro and in

vivo.

2. PubMed ID: 18958584, Prohibitin protects against oxidative stress-induced cell injury in cultured neonatal cardiomyocyte

3. PubMed ID: 19412742, NGFI-B targets mitochondria and induces cardiomyocyte apoptosis in restraint-stressed rats by mediating energy metabolism disorder

Visit bosterbio.com/anti-alpha-tubulin-rabbit-monoclonal-antibody-m08382-1-boster.html to see all 14 publications.

Submit a product review to Biocompare.com

Submit a review of this product to Biocompare.com to receive a \$20 Amazon.com giftcard! Your reviews help your fellow scientists make the right decisions. Thank you for your contribution.



Anti-alpha Tubulin TUBA1B Rabbit Monoclonal Antibody