

## Anti-alpha Tubulin TUBA1B Rabbit Monoclonal Antibody

Catalog Number: M08382

### About TUBA1B

Putative transcription factor involved in pancreas development and function.

### Overview

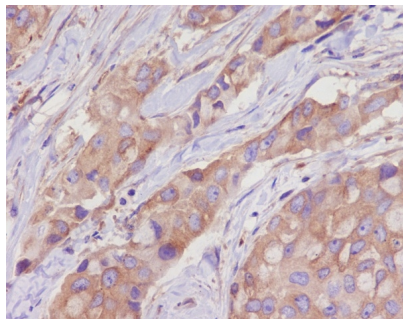
Product Name	Anti-alpha Tubulin TUBA1B Rabbit Monoclonal Antibody
Reactive Species	Human, Mouse, Rat
Description	Boster Bio Anti-alpha Tubulin TUBA1B Rabbit Monoclonal Antibody catalog # M08382. Tested in WB, IHC, ICC/IF, IP, Flow Cytometry applications. This antibody reacts with Human, Mouse, Rat.
Application	Flow Cytometry, IP, IF, IHC, ICC, WB
Clonality	Monoclonal CH-20
Formulation	Rabbit IgG in phosphate buffered saline, pH 7.4, 150mM NaCl, 0.02% sodium azide and 50% glycerol, 0.4-0.5mg/ml BSA.
Storage Instructions	Store at -20°C for one year. For short term storage and frequent use, store at 4°C for up to one month. Avoid repeated freeze-thaw cycles.
Host	Rabbit
Uniprot ID	P68366

### Technical Details

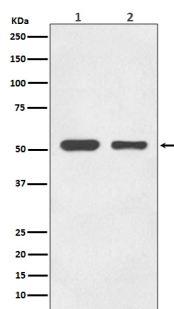
Immunogen	A synthesized peptide derived from human alpha Tubulin
Isotype	Rabbit IgG
Form	Liquid
Concentration	Actual concentration vary by lot. Use suggested dilution ratio to decide dilution procedure.
Purification	Affinity-chromatography
Suggested Dilutions	<p>Dilute the sample so that the expected range of concentrations fall within the detection range of this kit.</p> <p>If the expected range of concentration is unknown, a pilot test should be conducted to decide the optimal dilution ratio for your samples.</p> <p>Some PubMed article(s) citing the expression level of this target are as follows:</p> <p>Boster Bio's internal QC testing used:</p> <p>WB 1:1000-1:10000</p> <p>IHC 1:50-1:200</p> <p>ICC/IF 1:50-1:200</p>

	IP 1:50 FC 1:50
--	--------------------

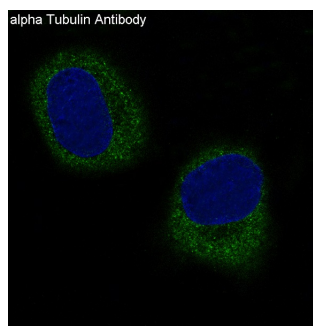
## Anti-alpha Tubulin TUBA1B Rabbit Monoclonal Antibody (M08382) Images



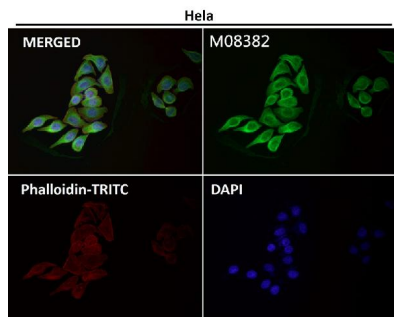
Immunohistochemical analysis of paraffin-embedded human breast cancer, using alpha Tubulin Antibody.



Western blot analysis of alpha Tubulin in (1) HeLa cell lysate; (2) HepG2 cell lysate; (3) NIH/3T3 cell lysate; (4) Mouse brain lysate; (5) C6 cell lysate.

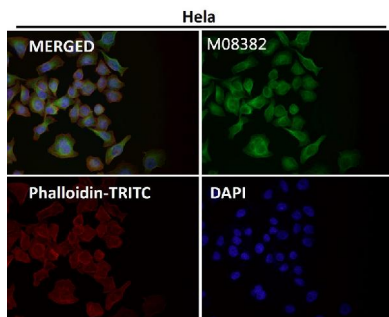
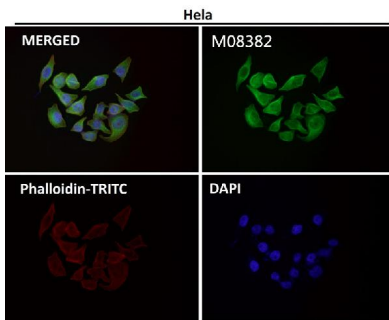


Immunofluorescent analysis of HeLa cells, using alpha Tubulin Antibody .

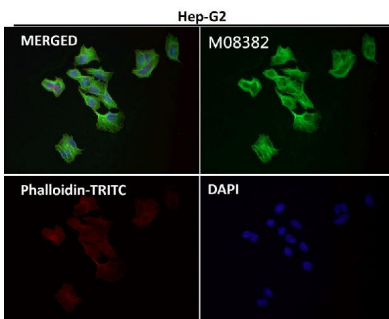


Immunofluorescent analysis using the Antibody at 1:50 dilution.

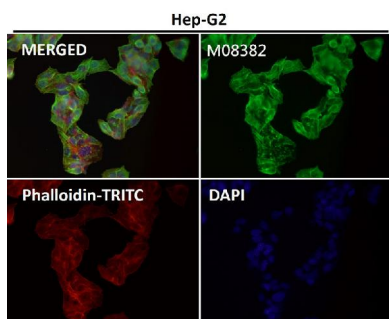
Immunofluorescent analysis using the Antibody at 1:150 dilution.



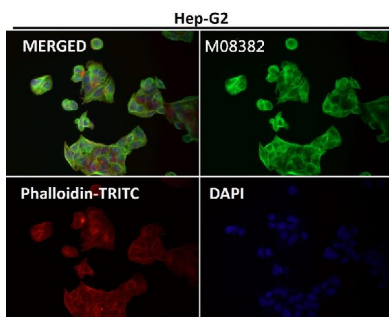
Immunofluorescent analysis using the Antibody at 1:500 dilution.



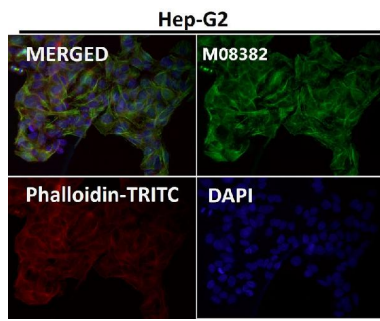
Immunofluorescent analysis using the Antibody at 1:50 dilution.



Immunofluorescent analysis using the Antibody at 1:50 dilution.



Immunofluorescent analysis using the Antibody at 1:150 dilution.



Immunofluorescent analysis using the Antibody at 1:500 dilution.

## 18 Publications Citing This Product

1. PubMed ID: 33456993, Zhu J, Lv Y, Hao J, Shi T, Wang S, Wang K, Fan X, Guo Y, Zhang J, Li J. N-myc downstream-regulated gene 2 promotes the protein stability of estrogen receptor beta via inhibition of ubiquitin-protein ligase E3A to suppress colorectal cancer. *J Gastrointest Oncol*. 2020
2. PubMed ID: 32518521, Yuan Y, Li B, Kuang Y, Ni S, Zhuge A, Yang J, Lv L, Gu S, Yan R, Li Y, Wang K, Yang L, Zhu X, Wu J, Bian X, Li L. The fiber metabolite butyrate reduces gp130 by targeting TRAF5 in colorectal cancer cells. *Cancer Cell Int*. 2020 Jun 3;20:212. doi:10.1186/s12935-020-01305-9
3. PubMed ID: 32831652, Ni S, Kuang Y, Yuan Y, Yu B. Mitochondrion-mediated iron accumulation promotes carcinogenesis and Warburg effect through reactive oxygen species in osteosarcoma. *Cancer Cell Int*. 2020 Aug 18;20:399. doi:10.1186/s12935-020-01494-3. PMID:32831652; PMCID:PMC743701

Visit [bosterbio.com/anti-alpha-tubulin-rabbit-monoclonal-antibody-m08382-boster.html](https://bosterbio.com/anti-alpha-tubulin-rabbit-monoclonal-antibody-m08382-boster.html) to see all 18 publications.

## Submit a product review to Biocompare.com

Submit a review of this product to Biocompare.com to receive a \$20 Amazon.com giftcard! Your reviews help your fellow scientists make the right decisions. Thank you for your contribution.



Anti-alpha Tubulin TUBA1B Rabbit Monoclonal Antibody