

## Anti-BTN3A2 Mouse Monoclonal Antibody [Clone ID: OTI1A6]

Catalog Number: M08900

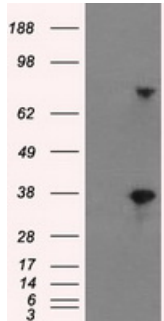
### Overview

Product Name	Anti-BTN3A2 Mouse Monoclonal Antibody [Clone ID: OTI1A6]
Reactive Species	Human
Description	Boster Bio Anti-BTN3A2 mouse monoclonal antibody, clone OTI1A6 (formerly 1A6). Catalog# M08900. Tested in IF, IHC, WB. This antibody reacts with Human.
Application	IF, IHC, WB
Clonality	Monoclonal OTI1A6
Formulation	PBS (pH 7.3) containing 1% BSA, 50% glycerol and 0.02% sodium azide.
Storage Instructions	Store at -20°C as received.
Host	Mouse
Uniprot ID	P78410

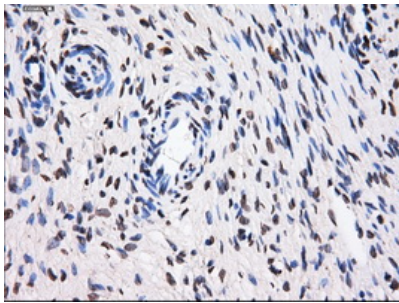
### Technical Details

Immunogen	Full length human recombinant protein of human BTN3A2 (NP_008978) produced in HEK293T cell.
Isotype	IgG1
Concentration	1 mg/ml
Purification	Purified from mouse ascites fluids or tissue culture supernatant by affinity chromatography (protein A/G)
Suggested Dilutions	Dilute the sample so that the expected range of concentrations fall within the detection range of this kit. If the expected range of concentration is unknown, a pilot test should be conducted to decide the optimal dilution ratio for your samples. Some PubMed article(s) citing the expression level of this target are as follows:

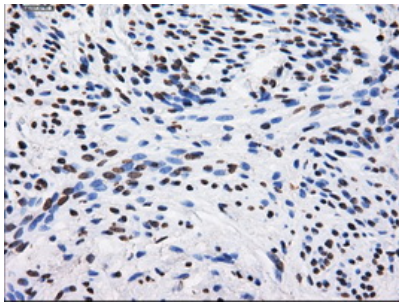
## Anti-BTN3A2 Mouse Monoclonal Antibody [Clone ID: OTI1A6] (M08900) Images



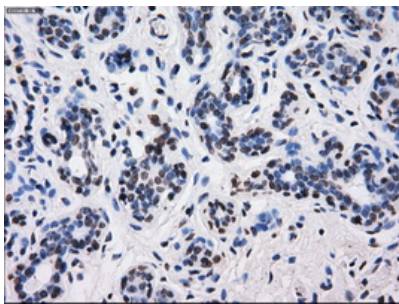
HEK293T cells were transfected with the pCMV6-ENTRY control (Left lane) or pCMV6-ENTRY BTN3A2 (Right lane) cDNA for 48 hrs and lysed. Equivalent amounts of cell lysates (5 ug per lane) were separated by SDS-PAGE and immunoblotted with anti-BTN3A2.



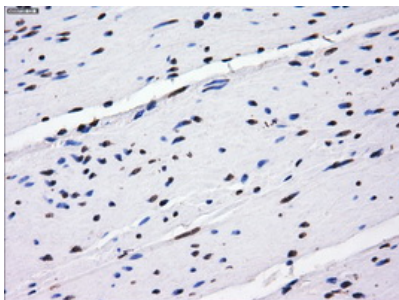
Immunohistochemical staining of paraffin-embedded Ovary tissue within the normal limits using anti-BTN3A2 mouse monoclonal antibody. (Heat-induced epitope retrieval by 10mM citric buffer)



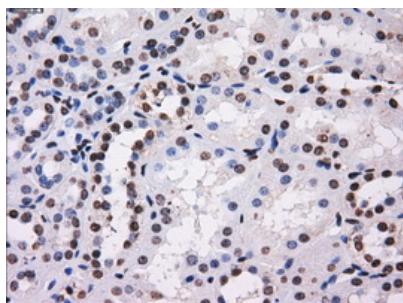
Immunohistochemical staining of paraffin-embedded endometrium tissue within the normal limits using anti-BTN3A2 mouse monoclonal antibody. (Heat-induced epitope retrieval by 10mM citric buffer)



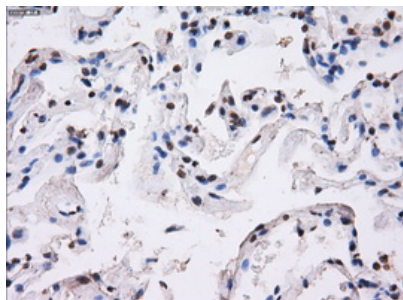
Immunohistochemical staining of paraffin-embedded breast tissue within the normal limits using anti-BTN3A2 mouse monoclonal antibody. (Heat-induced epitope retrieval by 10mM citric buffer)



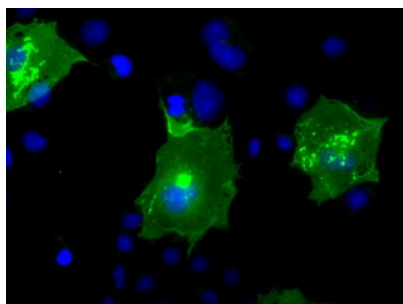
Immunohistochemical staining of paraffin-embedded colon tissue within the normal limits using anti-BTN3A2 mouse monoclonal antibody. (Heat-induced epitope retrieval by 10mM citric buffer)



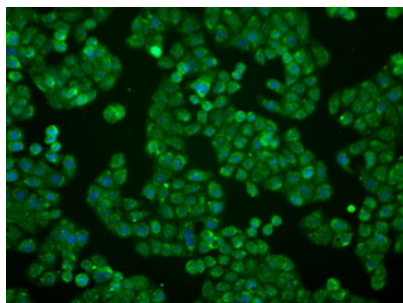
Immunohistochemical staining of paraffin-embedded Kidney tissue within the normal limits using anti-BTN3A2 mouse monoclonal antibody. (Heat-induced epitope retrieval by 10mM citric buffer)



Immunohistochemical staining of paraffin-embedded lung tissue within the normal limits using anti-BTN3A2 mouse monoclonal antibody. (Heat-induced epitope retrieval by 10mM citric buffer)



Anti-BTN3A2 mouse monoclonal antibody (M08900) immunofluorescent staining of COS7 cells transiently transfected by pCMV6-ENTRY BTN3A2.



Immunofluorescent staining of HT29 cells using anti-BTN3A2 mouse monoclonal antibody (M08900).

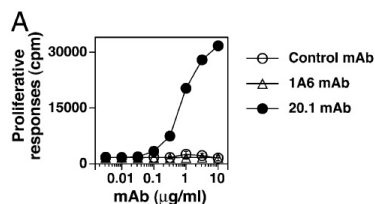


Figure from citation: Vg2Vd2 T cells proliferate in response to the 20.1 but not the 1A6 mAb

**Submit a product review to Biocompare.com**

Submit a review of this product to Biocompare.com to receive a \$20 Amazon.com giftcard! Your reviews help your fellow scientists make the right decisions. Thank you for your contribution.



**Anti-BTN3A2 Mouse Monoclonal Antibody [Clone ID: OT11A6]**