

Anti-APIP Antibody (Monoclonal, ABM19C7)

Catalog Number: M09029

About APIP

ASRGL1 (Asparaginase-like protein 1), also known as CRASH, is a 308 amino acid protein belonging to the Ntn-hydrolase family. Asparaginases utilize asparagine as a substrate to produce aspartic acid and ammonia. ASRGL1 has been identified as a autoantigenic protein that is present in the mid-piece of sperm after obstruction of the male reproductive tract. ASRGL1 is expressed highly in testis, but is also expressed in brain, kidney and gastrointestinal tissues. High levels of ASRGL1 have also been identified in ovarian, uterine and mammary tumors in comparison with normal tissues of the same origin.

Overview

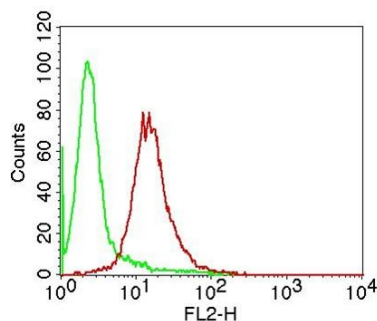
Product Name	Anti-APIP Antibody (Monoclonal, ABM19C7)
Reactive Species	Human
Description	Boster Bio Anti-APIP Antibody (Monoclonal, ABM19C7) (Catalog# M09029). Tested in WB, FACS application(s). This antibody reacts with Human.
Conjugate	Biotin
Application	WB, FACS
Clonality	Monoclonal ABM19C7
Formulation	100 ug in 200 ul PBS containing 0.05% BSA and 0.05% sodium azide.
Storage Instructions	Store the antibody at 4°C, stable for 6 months. For long-term storage, store at -20°C. Avoid repeated freeze and thaw cycles.
Host	Mouse
Uniprot ID	Q96GX9

Technical Details

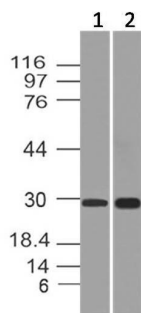
Immunogen	Full length recombinant protein of APIP
Predicted Reactive Species	Pig, Rabbit
Cross Reactivity	Does not cross-react with primate, avian or amphibian GR.
Isotype	IgG2b, Kappa
Form	Liquid
Concentration	0.5-1mg/ml, actual concentration vary by lot. Use suggested dilution ratio to decide dilution procedure.

Purification	Protein G Chromatography
Suggested Dilutions	<p>Dilute the sample so that the expected range of concentrations fall within the detection range of this kit.</p> <p>If the expected range of concentration is unknown, a pilot test should be conducted to decide the optimal dilution ratio for your samples.</p> <p>Some PubMed article(s) citing the expression level of this target are as follows:</p> <p>Boster Bio's internal QC testing used:</p> <p>WB: 4-6 µg/ml</p> <p>FACS: 0.5-1 µg/10⁶</p>

Anti-APIP Antibody (Monoclonal, ABM19C7) (M09029) Images



Intracellular flow cytometric analysis of APIP in HeLa cells using 0.5 μ m



Western blot analysis of APIP. Anti-APIP antibody (Clone: ABM19C7) was used at 4 μ m

Submit a product review to Biocompare.com

Submit a review of this product to Biocompare.com to receive a \$20 Amazon.com giftcard! Your reviews help your fellow scientists make the right decisions. Thank you for your contribution.



Anti-APIP Antibody (Monoclonal, ABM19C7)