

Anti-Secretagogin SCGN Antibody

Catalog Number: M10629-2

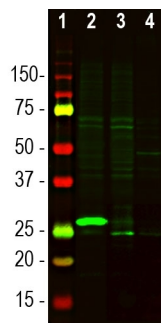
Overview

Product Name	Anti-Secretagogin SCGN Antibody
Reactive Species	Bovine, Human, Mouse, Rat
Description	Boster Bio Anti-Secretagogin SCGN Antibody catalog # M10629-2. Tested in IF, IHC, WB applications. This antibody reacts with Bovine, Human, Mouse, Rat.
Application	IF, IHC, WB
Clonality	Polyclonal
Formulation	Purified antibody at 1mg/mL in 50% PBS, 50% glycerol plus 5mM NaN ₃
Storage Instructions	Store at -20°C for one year. For short term storage and frequent use, store at 4°C for up to one month. Avoid repeated freeze-thaw cycles.
Host	Chicken
Uniprot ID	O76038

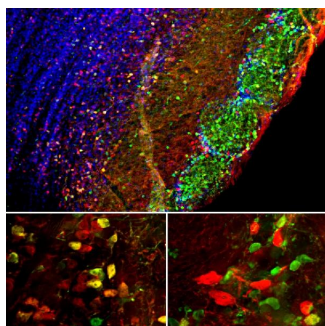
Technical Details

Immunogen	Full-length recombinant human secretagogin protein
Concentration	0.5-1mg/ml, actual concentration vary by lot. Use suggested dilution ratio to decide dilution procedure.
Suggested Dilutions	<p>Dilute the sample so that the expected range of concentrations fall within the detection range of this kit.</p> <p>If the expected range of concentration is unknown, a pilot test should be conducted to decide the optimal dilution ratio for your samples.</p> <p>Some PubMed article(s) citing the expression level of this target are as follows:</p> <p>Boster Bio's internal QC testing used:</p> <p>WB: 1:1,000-5,000 IF/ICC or IHC: 1:1,000-1:2,000</p>

Anti-Secretagogin SCGN Antibody (M10629-2) Images



Western blot analysis of tissue lysates using chicken pAb to secretagogin, M10629-2, dilution 1:1,000 in green: [1] protein standard, [2] mouse olfactory bulb [3] rat cerebellum, and [4] cow cerebellum. The band at ~27kDa corresponds to the secretagogin protein. Secretagogin protein is highly expressed in the mouse olfactory bulb, but significantly less in the cerebellum.



Immunofluorescent analysis of mouse brain olfactory bulb section stained with chicken pAb to secretagogin, M10629-2, dilution 1:1,000, in red, and costained with mouse mAb to calretinin, dilution 1:500 in green. The blue is Hoechst staining of nuclear DNA. Following transcardial perfusion with 4% paraformaldehyde, brain was post fixed for 24 hours, cut to 45M, and free-floating sections were stained with the above antibodies. Secretagogin is highly expressed in the mitral and granular cell layers, while calretinin is in the glomerular layer. Cells that express secretagogin or calretinin only are red or green respectively. A number of cells containing both proteins appears orange-yellow. Mouse select image at left for larger view.

Submit a product review to Biocompare.com

Submit a review of this product to Biocompare.com to receive a \$20 Amazon.com giftcard! Your reviews help your fellow scientists make the right decisions. Thank you for your contribution.



Anti-Secretagogin SCGN Antibody