

## Anti-IL-17RE Antibody (Monoclonal, ABM2G70)

Catalog Number: M11492

### About IL17RE

The regions of relatively constant sequence beyond the variable regions of immunoglobulins are termed constant regions (C regions) and are present in both the heavy and light chains. With very few exceptions, the sites of attachment for carbohydrates on immunoglobulins are located in these C regions. These regions also function to hold the variable regions together by using the disulfide bond between them. The C regions facilitate interaction with the antigen by increasing the maximum rotation of the immunoglobulin arms. Reportedly, a large population of patients with recurrent respiratory tract infection has low IgG4 concentrations. IgG4-related sclerosing disease has been recognized as a systemic disease entity characterized by an elevated serum IgG4 level, sclerosing fibrosis, and diffuse lymphoplasmacytic infiltration with the presence of many IgG4-positive plasma cells. IgG4 is overexpressed in inflammatory pseudotumor (IPT) and under expressed in inflammatory myofibroblastic tumor (IMT). In pulmonary nodular lymphoid hyperplasia (PNLH), there are an increased number of IgG4+ plasma cells.

### Overview

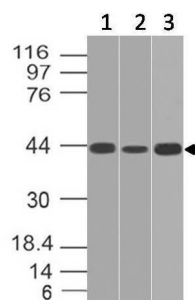
|                      |  |
|----------------------|--|
| Product Name         | Anti-IL-17RE Antibody (Monoclonal, ABM2G70)  |
| Reactive Species     | Human, Mouse   |
| Description          | Boster Bio Anti-IL-17RE Antibody (Monoclonal, ABM2G70) (Catalog# M11492). Tested in FACS, WB application(s). This antibody reacts with Human, Mouse. |
| Conjugate            | Biotin   |
| Application          | WB, FACS   |
| Clonality            | Monoclonal ABM2G70   |
| Formulation          | 100 µg in 200 µl PBS containing 0.05% BSA and 0.05% sodium azide.  |
| Storage Instructions | Store the antibody at 4°C, stable for 6 months. For long-term storage, store at -20°C. Avoid repeated freeze and thaw cycles.                        |
| Host                 | Mouse  |
| Uniprot ID           | Q8NFR9   |

### Technical Details

|                            |   |
|----------------------------|---|
| Immunogen                  | A partial length recombinant human IL-17RE protein (amino acids 50-268) |
| Predicted Reactive Species | Pig, Rabbit   |
| Cross Reactivity           | Does not cross-react with primate, avian or amphibian GR.               |
| Isotype                    | IgG2b Kappa   |
| Form                       | Liquid  |

|                     |   |
|---------------------|---|
| Concentration       | 0.5-1mg/ml, actual concentration vary by lot. Use suggested dilution ratio to decide dilution procedure.  |
| Purification        | Protein G Chromatography  |
| Suggested Dilutions | <p>Dilute the sample so that the expected range of concentrations fall within the detection range of this kit.</p> <p>If the expected range of concentration is unknown, a pilot test should be conducted to decide the optimal dilution ratio for your samples.</p> <p>Some PubMed article(s) citing the expression level of this target are as follows:</p> <p>Boster Bio's internal QC testing used:</p> <p>Western blot: 2-4 µg/ml</p> <p>Flow cytometry: 2-4 µg/10<sup>6</sup> Cells</p> |

## Anti-IL-17RE Antibody (Monoclonal, ABM2G70) (M11492) Images



Western blot analysis of IL-17RE. Anti-IL-17RE antibody (Clone: ABM2G70) was tested at 2 ug/ml on (1) Jurkat, (2) PC3 and (3) NIH3T3 lysates.

### Submit a product review to Biocompare.com

Submit a review of this product to Biocompare.com to receive a \$20 Amazon.com giftcard! Your reviews help your fellow scientists make the right decisions. Thank you for your contribution.



Anti-IL-17RE Antibody (Monoclonal, ABM2G70)