

Anti-Cytokeratin, pan (Epithelial Marker) Monoclonal Antibody

Catalog Number: M14209-2

About KRT77 & KRT76

Twenty human keratins are resolved with two-dimensional gel electrophoresis into acidic (pI 6.0) subfamilies. This antibody cocktail recognizes acidic (Type I or LMW) and basic (Type II or HMW) cytokeratins, which 67kDa (CK1); 64kDa (CK3); 59kDa (CK4); 58kDa (CK5); 56kDa (CK6); 52kDa (CK8); 56.5kDa (CK10); 50kDa (CK14); 50kDa (CK15); 48kDa (CK16); 40kDa (CK19). Many studies have shown the usefulness of keratins as markers in cancer research and tumor diagnosis. AE-1/AE-3 is a broad spectrum anti pan-cytokeratin antibody cocktail, which differentiates epithelial tumors from non-epithelial tumors e.g. squamous vs. adenocarcinoma of the lung, liver carcinoma, breast cancer, and esophageal cancer. It has been used to characterize the source of various neoplasms and to study the distribution of cytokeratin containing cells in epithelia during normal development and during the development of epithelial neoplasms. This antibody stains cytokeratins present in normal and abnormal human tissues and has shown high sensitivity in the recognition of epithelial cells and carcinomas.

Overview

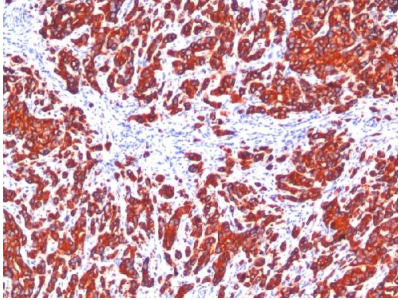
Product Name	Anti-Cytokeratin, pan (Epithelial Marker) Monoclonal Antibody
Reactive Species	Chicken, Cow, Dog, Human, Monkey, Mouse, Rabbit, Rat
Description	Boster Bio Anti-Cytokeratin, pan (Epithelial Marker) Monoclonal Antibody (Catalog # M14209-2). Tested in Flow Cytometry, IF, WB, IHC applications. This antibody reacts with Human, Monkey, Cow, Dog, Rabbit, Mouse, Rat, Chicken.
Conjugate	Biotin
Application	Flow Cytometry, IF, IHC, WB
Clonality	Monoclonal Clone: SPM115 + SPM116
Formulation	Prepared in 10mM PBS with 0.05% BSA & 0.05% azide. Also available WITHOUT BSA & azide at 1.0mg/ml.
Storage Instructions	Antibody with azide - store at 2 to 8°C. Antibody without azide - store at -20 to -80°C. Antibody is stable for 24 months. Non-hazardous. No MSDS required.
Host	Mouse
Uniprot ID	Q7Z794; Q01546

Technical Details

Immunogen	Human epidermal keratin
Predicted Reactive Species	Pig, Rabbit
Cross Reactivity	Does not cross-react with primate, avian or amphibian GR.
Isotype	IgG1, kappa

Form	Liquid
Concentration	Purified antibody with BSA and azide at 200ug/ml
Purification	200ug/ml of antibody purified from Bioreactor Concentrate by Protein A/G.
Suggested Dilutions	<p>Dilute the sample so that the expected range of concentrations fall within the detection range of this kit.</p> <p>If the expected range of concentration is unknown, a pilot test should be conducted to decide the optimal dilution ratio for your samples.</p> <p>Some PubMed article(s) citing the expression level of this target are as follows:</p> <p>Boster Bio's internal QC testing used:</p> <p>Flow Cytometry (1-2ug/million cells)</p> <p>Immunofluorescence (1-2ug/ml)</p> <p>Western Blot (1-2ug/ml for 2 hours at RT)</p> <p>Immunohistochemistry (Formalin-fixed) (1-2ug/ml for 30 min at RT)(Staining of formalin-fixed tissues requires heating tissue sections in 10mM Tris with 1mM EDTA, pH 9.0, for 45 min at 95&degC followed by cooling at RT for 20 minutes)</p> <p>Optimal dilution for a specific application should be determined.</p>

Anti-Cytokeratin, pan (Epithelial Marker) Monoclonal Antibody (M14209-2) Images



Formalin-fixed, paraffin-embedded human Breast Carcinoma stained with Anti-Cytokeratin, Pan Monoclonal Antibody cocktail (SPM115 + SPM116).

2 Publications Citing This Product

1. PubMed ID: 10.1371/journal.pone.0022283, Sodium Coupled Bicarbonate Influx Regulates Intracellular and Apical pH in Cultured Rat Caput Epididymal Epithelium
2. PubMed ID: 10.1016/j.jcyt.2017.02.003, Human amniotic mesenchymal stromal cell transplantation improves endometrial regeneration in rodent models of intrauterine adhesions

Visit bosterbio.com/anti-cytokeratin-pan-epithelial-marker-antibody-m14209-2-boster.html to see all 2 publications.

Submit a product review to Biocompare.com

Submit a review of this product to Biocompare.com to receive a \$20 Amazon.com giftcard! Your reviews help your fellow scientists make the right decisions. Thank you for your contribution.



Anti-Cytokeratin, pan (Epithelial Marker) Monoclonal Antibody