

Anti-Cytokeratin, pan (Epithelial Marker) Antibody

Catalog Number: M14209-3

About Multiple

Twenty human keratins are resolved with two-dimensional gel electrophoresis into acidic (pI 6.0) subfamilies. This antibody cocktail recognizes acidic (Type I or LMW) and basic (Type II or HMW) cytokeratins, which 67kDa (CK1); 64kDa (CK3); 59kDa (CK4); 58kDa (CK5); 56kDa (CK6); 52kDa (CK8); 56.5kDa (CK10); 50kDa (CK14); 50kDa (CK15); 48kDa (CK16); 40kDa (CK19). Many studies have shown the usefulness of keratins as markers in cancer research and tumor diagnosis. It is a broad spectrum anti pan-cytokeratin antibody, which differentiates epithelial tumors from non-epithelial tumors e.g. squamous vs. adenocarcinoma of the lung, liver carcinoma, breast cancer, and esophageal cancer. It may be useful to characterize the source of various neoplasms and to study the distribution of cytokeratin containing cells in epithelia during normal development and during the development of epithelial neoplasms. This antibody stains cytokeratins present in normal and abnormal human tissues and has high sensitivity in the recognition of epithelial cells and carcinomas.

Overview

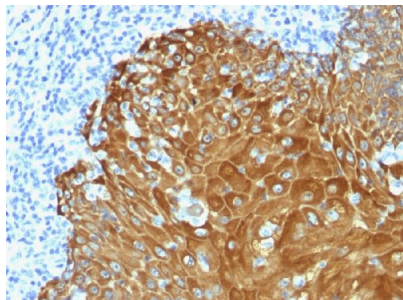
Product Name	Anti-Cytokeratin, pan (Epithelial Marker) Antibody
Reactive Species	Human
Description	Boster Bio Anti-Cytokeratin, pan (Epithelial Marker) Antibody (Catalog # M14209-3). Tested in Flow Cytometry, IF, WB applications. This antibody reacts with Human.
Conjugate	Biotin
Application	Flow Cytometry, IF, WB
Clonality	Polyclonal
Formulation	Prepared in 10mM PBS with 0.05% BSA & 0.05% azide. Also available WITHOUT BSA & azide at 1.0mg/ml.
Storage Instructions	Antibody with azide - store at 2 to 8 °C. Antibody without azide - store at -20 to -80 °C. Antibody is stable for 24 months. Non-hazardous. No MSDS required.
Host	Rabbit
Uniprot ID	Multiple

Technical Details

Immunogen	Recombinant full-length human KRT76 and KRT77 proteins
Predicted Reactive Species	Pig, Rabbit
Cross Reactivity	Does not cross-react with primate, avian or amphibian GR.
Isotype	IgG, kappa

Form	Liquid
Concentration	Purified antibody with BSA and azide at 200ug/ml
Purification	200ug/ml of antibody purified by Protein A.
Suggested Dilutions	<p>Dilute the sample so that the expected range of concentrations fall within the detection range of this kit.</p> <p>If the expected range of concentration is unknown, a pilot test should be conducted to decide the optimal dilution ratio for your samples.</p> <p>Some PubMed article(s) citing the expression level of this target are as follows:</p> <p>Boster Bio's internal QC testing used:</p> <p>Flow Cytometry (0.5-1ug/million cells)</p> <p>Immunofluorescence (1-2ug/ml)</p> <p>Western Blotting (0.5-1ug/ml for 2 hours at RT)</p> <p>Immunohistology (Formalin-fixed) (0.25-0.5ug/ml for 30 min at RT) (Staining of formalin-fixed tissues requires boiling tissue sections in 10mM citrate buffer, pH 6.0, for 10-20 min followed by cooling at RT for 20 minutes)</p> <p>Optimal dilution for a specific application should be determined.</p>

Anti-Cytokeratin, pan (Epithelial Marker) Antibody (M14209-3) Images



Formalin-fixed, paraffin-embedded human Skin stained with Anti-Cytokeratin, Pan Rabbit Polyclonal Antibody.

1 Publications Citing This Product

1. PubMed ID: 29312523, Wu Y, Wang Y, Ji Y, Ou Y, Xia H, Zhang B, Zhao Y. Am J Transl Res. 2017 Dec 15;9(12):5708-5718. eCollection 2017. C4orf7 modulates osteogenesis and adipogenesis of human periodontal ligament cells

Visit bosterbio.com/anti-cytokeratin-pan-epithelial-marker-antibody-m14209-3-boster.html to see all 1 publications.

Submit a product review to Biocompare.com

Submit a review of this product to Biocompare.com to receive a \$20 Amazon.com giftcard! Your reviews help your fellow scientists make the right decisions. Thank you for your contribution.



Anti-Cytokeratin, pan (Epithelial Marker) Antibody