

## Anti-Trimethyl-Histone H4 (Lys20) HIST1H4A Rabbit Monoclonal Antibody, Clone#RM208

Catalog Number: M14495-11

### Overview

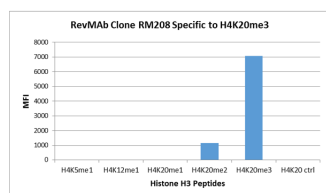
|                      |   |
|----------------------|---|
| Product Name         | Anti-Trimethyl-Histone H4 (Lys20) HIST1H4A Rabbit Monoclonal Antibody, Clone#RM208  |
| Reactive Species     | Human, Vertebrates  |
| Description          | Boster Bio Anti-Trimethyl-Histone H4 (Lys20) HIST1H4A Rabbit Monoclonal Antibody, Clone#RM208 (Catalog # M14495-11). Tested in WB, ELISA, Luminex applications. This antibody reacts with Human, Vertebrates. |
| Application          | ELISA, WB, Luminex  |
| Clonality            | Monoclonal RM208  |
| Formulation          | 50% Glycerol/PBS with 1% BSA and 0.09% sodium azide   |
| Storage Instructions | Store at -20°C for one year. Avoid repeated freeze-thaw cycles.   |
| Host                 | Rabbit  |
| Uniprot ID           | P62805  |

### Technical Details

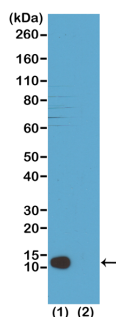
|                     |   |
|---------------------|---|
| Immunogen           | A trimethyl-peptide corresponding to trimethyl-Histone H4 (Lys20)   |
| Cross Reactivity    | Reacts to Histone H4 trimethylated at Lysine 20(K20me3). May slightly cross-react to dimethylated Lysine 20(K20me2) at a higher concentration. No cross-reactivity: non-modified Lysine 20, monomethylated Lysine 20(K20me1), or other methylations   |
| Isotype             | Rabbit IgG  |
| Form                | Liquid  |
| Concentration       | 1 mg/mL   |
| Purification        | Protein A affinity purified from an animal origin-free culture supernatant  |
| Suggested Dilutions | <p>Dilute the sample so that the expected range of concentrations fall within the detection range of this kit.</p> <p>If the expected range of concentration is unknown, a pilot test should be conducted to decide the optimal dilution ratio for your samples.</p> <p>Some PubMed article(s) citing the expression level of this target are as follows:</p> <p>Boster Bio's internal QC testing used:</p> <p>Western Blot: 1 ug/mL - 2 ug/mL</p> <p>ELISA: 0.5 ug/mL - 1 ug/mL</p> <p>Luminex: 0.1 ug/mL - 0.5 ug/mL.</p> |



## Anti-Trimethyl-Histone H4 (Lys20) HIST1H4A Rabbit Monoclonal Antibody, Clone#RM208 (M14495-11) Images



**Figure 1. Specificity Test result**  
RM208 specifically reacts to Histone H4 trimethylated at Lysine 20 (K20me3). May slightly cross react to dimethylated Lysine 20 (K20me2) at higher concentrations. No cross reactivity with non-modified Lysine 20, monomethylated Lysine 20 (K20me1), or other methylations in histone H4.



**Figure 2. Specificity Test result**  
RM208 specifically reacts to Histone H4 trimethylated at Lysine 20 (K20me3). May slightly cross react to dimethylated Lysine 20 (K20me2) at higher concentrations. No cross reactivity with non-modified Lysine 20, monomethylated Lysine 20 (K20me1), or other methylations in histone H4.

**Submit a product review to Biocompare.com**

Submit a review of this product to Biocompare.com to receive a \$20 Amazon.com giftcard! Your reviews help your fellow scientists make the right decisions. Thank you for your contribution.



Anti-Trimethyl-Histone H4 (Lys20) HIST1H4A Rabbit Monoclonal Antibody, Clone#RM208