

# Anti-Histone H4 (mono methyl K16) HIST1H4A Rabbit Monoclonal Antibody

Catalog Number: M14495-1

## About HIST1H4A

Putative transcription factor involved in pancreas development and function.

## Overview

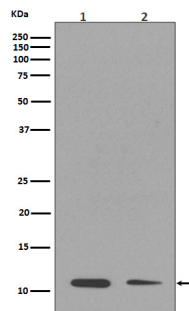
Product Name	Anti-Histone H4 (mono methyl K16) HIST1H4A Rabbit Monoclonal Antibody
Reactive Species	Human, Mouse
Description	Boster Bio Anti-Histone H4 (mono methyl K16) HIST1H4A Rabbit Monoclonal Antibody catalog # M14495-1. Tested in WB, ICC/IF applications. This antibody reacts with Human, Mouse.
Application	IF, ICC, WB
Clonality	Monoclonal DEF-8
Formulation	Rabbit IgG in phosphate buffered saline, pH 7.4, 150mM NaCl, 0.02% sodium azide and 50% glycerol, 0.4-0.5mg/ml BSA.
Storage Instructions	Store at -20°C for one year. For short term storage and frequent use, store at 4°C for up to one month. Avoid repeated freeze-thaw cycles.
Host	Rabbit
Uniprot ID	P62805

## Technical Details

Immunogen	A synthesized peptide derived from human Histone H4 (mono methyl K16)
Isotype	Rabbit IgG
Form	Liquid
Concentration	Actual concentration vary by lot. Use suggested dilution ratio to decide dilution procedure.
Purification	Affinity-chromatography
Suggested Dilutions	Dilute the sample so that the expected range of concentrations fall within the detection range of this kit. If the expected range of concentration is unknown, a pilot test should be conducted to decide the optimal dilution ratio for your samples. Some PubMed article(s) citing the expression level of this target are as follows: Boster Bio's internal QC testing used: WB 1:500-1:2000

	ICC/IF 1:500-1:2000
--	---------------------

## Anti-Histone H4 (mono methyl K16) HIST1H4A Rabbit Monoclonal Antibody (M14495-1) Images



### Submit a product review to Biocompare.com

Submit a review of this product to Biocompare.com to receive a \$20 Amazon.com giftcard! Your reviews help your fellow scientists make the right decisions. Thank you for your contribution.



Anti-Histone H4 (mono methyl K16) HIST1H4A Rabbit Monoclonal Antibody