

Anti-Histone H4 (acetyl K16) HIST1H4A Monoclonal Antibody

Catalog Number: M14495-3

About HIST1H4A

Putative transcription factor involved in pancreas development and function.

Overview

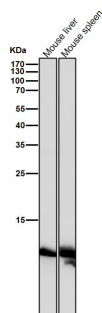
Product Name	Anti-Histone H4 (acetyl K16) HIST1H4A Monoclonal Antibody
Reactive Species	Human, Mouse, Rat
Description	Boster Bio Anti-Histone H4 (acetyl K16) HIST1H4A Monoclonal Antibody catalog # M14495-3. Tested in WB, IHC, ICC/IF, Flow Cytometry applications. This antibody reacts with Human, Mouse, Rat.
Application	Flow Cytometry, IF, IHC, ICC, WB
Clonality	Monoclonal COC-8
Formulation	Rabbit IgG in phosphate buffered saline, pH 7.4, 150mM NaCl, 0.02% sodium azide and 50% glycerol, 0.4-0.5mg/ml BSA.
Storage Instructions	Store at -20°C for one year. For short term storage and frequent use, store at 4°C for up to one month. Avoid repeated freeze-thaw cycles.
Host	Rabbit
Uniprot ID	P62805

Technical Details

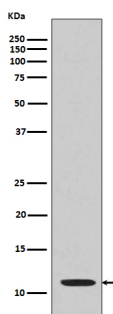
Immunogen	A synthesized peptide derived from human Histone H4 (acetyl K16)
Isotype	Rabbit IgG
Form	Liquid
Concentration	Actual concentration vary by lot. Use suggested dilution ratio to decide dilution procedure.
Purification	Affinity-chromatography
Suggested Dilutions	<p>Dilute the sample so that the expected range of concentrations fall within the detection range of this kit.</p> <p>If the expected range of concentration is unknown, a pilot test should be conducted to decide the optimal dilution ratio for your samples.</p> <p>Some PubMed article(s) citing the expression level of this target are as follows:</p> <p>Boster Bio's internal QC testing used:</p> <p>WB 1:500-1:2000</p> <p>IHC 1:50-1:200</p>

	ICC/IF 1:50-1:200 FC 1:50
--	------------------------------

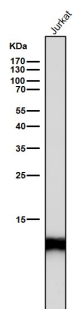
Anti-Histone H4 (acetyl K16) HIST1H4A Monoclonal Antibody (M14495-3) Images



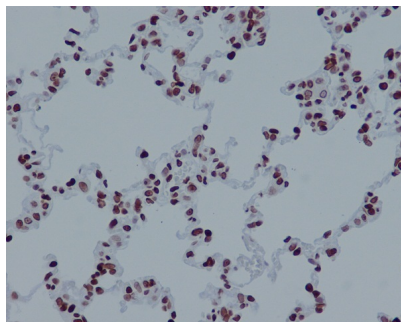
All lanes use the Antibody at 1:1K dilution for 1 hour at room temperature.



Western blot analysis of Acetyl-Histone H4 (K16) expression in HeLa cell lysate treated with TSA.

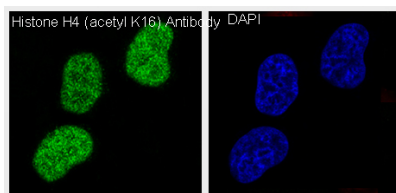
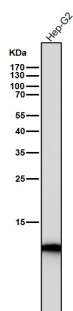


All lanes use the Antibody at 1:1K dilution for 1 hour at room temperature.



Immunohistochemical analysis of paraffin-embedded rat lung, using Histone H4 (acetyl K16) Antibody.

All lanes use the Antibody at 1:1K dilution for 1 hour at room temperature.



Immunofluorescent analysis of HeLa cells treated with TSA, using Histone H4 (acetyl K16) Antibody .

Submit a product review to Biocompare.com

Submit a review of this product to Biocompare.com to receive a \$20 Amazon.com giftcard! Your reviews help your fellow scientists make the right decisions. Thank you for your contribution.



Anti-Histone H4 (acetyl K16) HIST1H4A Monoclonal Antibody