

Anti-Acetyl-Histone H4 (Lys20) HIST1H4A Rabbit Monoclonal Antibody, Clone#RM205

Catalog Number: M14495-9

Overview

Product Name	Anti-Acetyl-Histone H4 (Lys20) HIST1H4A Rabbit Monoclonal Antibody, Clone#RM205
Reactive Species	Human, Vertebrates
Description	Boster Bio Anti-Acetyl-Histone H4 (Lys20) HIST1H4A Rabbit Monoclonal Antibody, Clone#RM205 (Catalog # M14495-9). Tested in ChIP, WB, ELISA, Luminex, ICC applications. This antibody reacts with Human, Vertebrates.
Application	ChIP, ELISA, ICC, WB, Luminex
Clonality	Monoclonal RM205
Formulation	50% Glycerol/PBS with 1% BSA and 0.09% sodium azide
Storage Instructions	Store at -20°C for one year. Avoid repeated freeze-thaw cycles.
Host	Rabbit
Uniprot ID	P62805

Technical Details

Immunogen	An acetyl-peptide corresponding to the Acetyl-Histone H4 (Lys20).
Cross Reactivity	This antibody reacts to Histone H4 acetylated at Lysine 20 (K20ac). No cross-reactivity with other acetylated Lysines in Histone H4.
Isotype	Rabbit IgG
Form	Liquid
Concentration	1 mg/mL
Purification	Protein A affinity purified from an animal origin-free culture supernatant
Suggested Dilutions	<p>Dilute the sample so that the expected range of concentrations fall within the detection range of this kit.</p> <p>If the expected range of concentration is unknown, a pilot test should be conducted to decide the optimal dilution ratio for your samples.</p> <p>Some PubMed article(s) citing the expression level of this target are as follows:</p> <p>Boster Bio's internal QC testing used:</p> <p>ChIP: 1µg-5 µg</p> <p>Western Blot: 1 ug/mL - 2 ug/mL</p> <p>ELISA: 0.2 ug/mL - 1 ug/mL</p> <p>Luminex: 0.1 ug/mL - 1 ug/mL</p>

	Immunocytochemistry: 1 ug/mL- 2 ug/mL.
--	--

Anti-Acetyl-Histone H4 (Lys20) HIST1H4A Rabbit Monoclonal Antibody, Clone#RM205 (M14495-9) Images

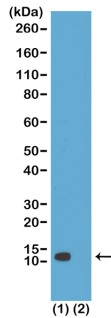


Figure 1. Western Blotting result
Western Blot of (1) acid extracts of HeLa cells; (2) recombinant Histone H4. Using RM205 at 1 ug/mL, showed a band of Histone H4 acetylated at Lysine 20 in HeLa cells.

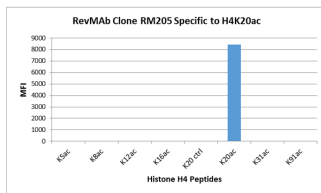


Figure 2. Specificity Test result
RM205 specifically reacts to Histone H4 acetylated at Lysine 20 (K20ac). No cross reactivity with unmodified Lysine 20 (K20 ctrl), acetylated Lysine 5 (K5ac), Lysine 8 (K8ac), Lysine 12 (K12ac), Lysine 16 (K16ac), Lysine 31 (K31ac), or Lysine 91 (K91) in Histone H4.

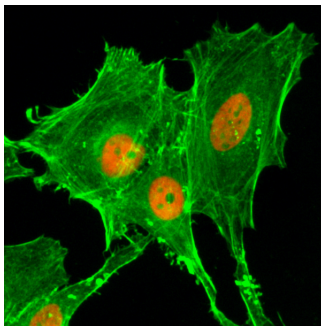


Figure 3. ICC result
Immunocytochemical staining of HeLa cells treated with sodium butyrate, using anti-Acetyl-Histone H4 (Lys20) Rabbit Monoclonal Antibody (Clone RM205) (red). Actin filaments have been labeled with fluorescein phalloidin (green).

Submit a product review to Biocompare.com

Submit a review of this product to Biocompare.com to receive a \$20 Amazon.com giftcard! Your reviews help your fellow scientists make the right decisions. Thank you for your contribution.



Anti-Acetyl-Histone H4 (Lys20) HIST1H4A Rabbit Monoclonal Antibody, Clone#RM205