

## Anti-gp100 / Melanosome / PMEL17 / SILV (Melanoma Marker) Monoclonal Antibody

Catalog Number: M19774

### About SILV

By immunohistochemistry, it specifically recognizes a protein in melanocytes and melanomas. This monoclonal antibody reacts with junctional and blue nevus cells and variably with fetal and neonatal melanocytes. Intradermal nevi, normal adult melanocytes, and non-melanocytic cells are negative. It does not stain tumor cells of epithelial, lymphoid, glial, or mesenchymal origin. This monoclonal antibody labels formalin-fixed, paraffin-embedded melanomas and other tumors showing melanocytic differentiation.

### Overview

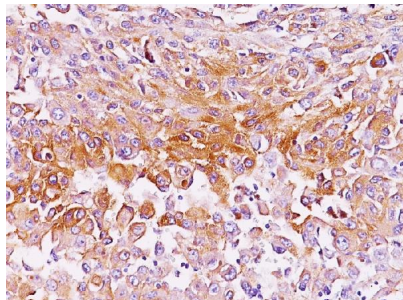
Product Name	Anti-gp100 / Melanosome / PMEL17 / SILV (Melanoma Marker) Monoclonal Antibody
Reactive Species	Human, Horse
Description	Boster Bio Anti-gp100 / Melanosome / PMEL17 / SILV (Melanoma Marker) Monoclonal Antibody (Catalog # M19774). Tested in Flow Cytometry, IF, IHC applications. This antibody reacts with Human, Horse.
Conjugate	Biotin
Application	Flow Cytometry, IF, IHC
Clonality	Monoclonal Clone: SPM286
Formulation	Prepared in 10mM PBS with 0.05% BSA & 0.05% azide. Also available WITHOUT BSA & azide at 1.0mg/ml.
Storage Instructions	Antibody with azide - store at 2 to 8°C. Antibody without azide - store at -20 to -80°C. Antibody is stable for 24 months. Non-hazardous. No MSDS required.
Host	Mouse
Uniprot ID	P40967

### Technical Details

Immunogen	Membranes from a human melanoma metastasis
Predicted Reactive Species	Pig, Rabbit
Cross Reactivity	Does not cross-react with primate, avian or amphibian GR.
Isotype	IgG2b, kappa
Form	Liquid

Concentration	Purified antibody with BSA and azide at 200ug/ml
Purification	200ug/ml of antibody purified from Bioreactor Concentrate by Protein A/G.
Suggested Dilutions	<p>Dilute the sample so that the expected range of concentrations fall within the detection range of this kit.</p> <p>If the expected range of concentration is unknown, a pilot test should be conducted to decide the optimal dilution ratio for your samples.</p> <p>Some PubMed article(s) citing the expression level of this target are as follows:</p> <p>Boster Bio's internal QC testing used:</p> <p>Flow Cytometry (1-2ug/million cells)</p> <p>Immunofluorescence (1-2ug/ml)</p> <p>Immunohistochemistry (Formalin-fixed) (1-2ug/ml for 30 minutes at RT)(Staining of formalin-fixed tissues requires heating tissue sections in 10mM Tris with 1mM EDTA, pH 9.0, for 45 min at 95&amp;degC followed by cooling at RT for 20 minutes)</p> <p>Optimal dilution for a specific application should be determined.</p>

## Anti-gp100 / Melanosome / PMEL17 / SILV (Melanoma Marker) Monoclonal Antibody (M19774) Images



Formalin-fixed, paraffin-embedded human Melanoma stained with Anti-gp100 Monoclonal Antibody (SPM286).

### Submit a product review to Biocompare.com

Submit a review of this product to Biocompare.com to receive a \$20 Amazon.com giftcard! Your reviews help your fellow scientists make the right decisions. Thank you for your contribution.



Anti-gp100 / Melanosome / PMEL17 / SILV (Melanoma Marker) Monoclonal Antibody