

Anti-Siglec-H Antibody (Monoclonal, ABM2B55)

Catalog Number: M30285

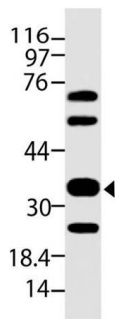
Overview

Product Name	Anti-Siglec-H Antibody (Monoclonal, ABM2B55)
Reactive Species	Mouse
Description	Boster Bio Anti-Siglec-H Antibody (Monoclonal, ABM2B55) (Catalog# M30285). Tested in WB application(s). This antibody reacts with Mouse.
Application	WB
Clonality	Monoclonal ABM2B55
Formulation	100 ug in 200 ul PBS containing 0.05% BSA and 0.05% sodium azide.
Storage Instructions	Store the antibody at 4°C, stable for 6 months. For long-term storage, store at -20°C. Avoid repeated freeze and thaw cycles.
Host	Rat
Uniprot ID	Q3Y597

Technical Details

Immunogen	A partial length recombinant mouse Siglec-H protein (amino acids 109-309)
Isotype	IgG2a Kappa
Form	Liquid
Concentration	0.5-1mg/ml, actual concentration vary by lot. Use suggested dilution ratio to decide dilution procedure.
Purification	Protein G Chromatography
Suggested Dilutions	<p>Dilute the sample so that the expected range of concentrations fall within the detection range of this kit.</p> <p>If the expected range of concentration is unknown, a pilot test should be conducted to decide the optimal dilution ratio for your samples.</p> <p>Some PubMed article(s) citing the expression level of this target are as follows:</p> <p>Boster Bio's internal QC testing used:</p> <p>Western blot: 2-4 µg/ml</p>

Anti-Siglec-H Antibody (Monoclonal, ABM2B55) (M30285) Images



Western blot analysis of Siglec-H. Anti-Siglec-H antibody (Clone: ABM2B55) was used at 2 μ g/ml

Submit a product review to Biocompare.com

Submit a review of this product to Biocompare.com to receive a \$20 Amazon.com giftcard! Your reviews help your fellow scientists make the right decisions. Thank you for your contribution.



Anti-Siglec-H Antibody (Monoclonal, ABM2B55)