

## Anti-Maltose Binding Protein male Rabbit Monoclonal Antibody

Catalog Number: M30934

### About male

Putative transcription factor involved in pancreas development and function.

### Overview

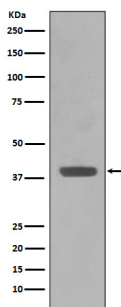
Product Name	Anti-Maltose Binding Protein male Rabbit Monoclonal Antibody
Reactive Species	E.coli
Description	Boster Bio Anti-Maltose Binding Protein male Rabbit Monoclonal Antibody catalog # M30934. Tested in WB application. This antibody reacts with E.coli.
Application	WB
Clonality	Monoclonal AIF-13
Formulation	Rabbit IgG in phosphate buffered saline, pH 7.4, 150mM NaCl, 0.02% sodium azide and 50% glycerol, 0.4-0.5mg/ml BSA.
Storage Instructions	Store at -20°C for one year. For short term storage and frequent use, store at 4°C for up to one month. Avoid repeated freeze-thaw cycles.
Host	Rabbit
Uniprot ID	P0AEX9

### Technical Details

Immunogen	A synthesized peptide derived from human Maltose Binding Protein
Isotype	Rabbit IgG
Form	Liquid
Concentration	Actual concentration vary by lot. Use suggested dilution ratio to decide dilution procedure.
Purification	Affinity-chromatography
Suggested Dilutions	Dilute the sample so that the expected range of concentrations fall within the detection range of this kit. If the expected range of concentration is unknown, a pilot test should be conducted to decide the optimal dilution ratio for your samples. Some PubMed article(s) citing the expression level of this target are as follows: Boster Bio's internal QC testing used: WB 1:500-1:2000



## Anti-Maltose Binding Protein malE Rabbit Monoclonal Antibody (M30934) Images



Western blot analysis of Maltose Binding Protein expression in E.coli lysate.

### Submit a product review to Biocompare.com

Submit a review of this product to Biocompare.com to receive a \$20 Amazon.com giftcard! Your reviews help your fellow scientists make the right decisions. Thank you for your contribution.



Anti-Maltose Binding Protein malE Rabbit Monoclonal Antibody