

Anti-Cytokeratin 6 (KRT6) (Hyperproliferation-Related Keratin) Monoclonal Antibody

Catalog Number: M30943

About KRT6A; KRT6B; KRT6C

This monoclonal antibody recognizes a protein of 56kDa, identified as cytokeratin 6 (CK6). In humans, multiple isoforms of Cytokeratin 6 (6A-6F), encoded by several highly homologous genes, have distinct tissue expression patterns, and Cytokeratin 6A is the dominant form in epithelial tissue. The gene encoding human Cytokeratin 6A maps to chromosome 12q13, and mutations in this gene are linked to several inheritable hair and skin pathologies. Keratins 6 and 16 are expressed in keratinocytes, which are undergoing rapid turnover in the suprabasal region (also known as hyper-proliferation-related keratins). Keratin 6 is found in hair follicles, suprabasal cells of a variety of internal stratified epithelia, in epidermis, in both normal and hyper-proliferative situations. Epidermal injury results in activation of keratinocytes, which express CK6 and CK16. CK6 is strongly expressed in about 75% of head and neck squamous cell carcinomas. Expression of CK6 is particularly associated with differentiation.

Overview

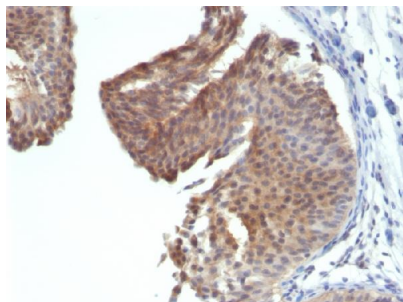
Product Name	Anti-Cytokeratin 6 (KRT6) (Hyperproliferation-Related Keratin) Monoclonal Antibody
Reactive Species	Human, Mouse
Description	Boster Bio Anti-Cytokeratin 6 (KRT6) (Hyperproliferation-Related Keratin) Monoclonal Antibody (Catalog # M30943). Tested in IHC applications. This antibody reacts with Human, Mouse.
Conjugate	Biotin
Application	IHC
Clonality	Monoclonal Clone: KRT6/1702
Formulation	Prepared in 10mM PBS with 0.05% BSA & 0.05% azide. Also available WITHOUT BSA & azide at 1.0mg/ml.
Storage Instructions	Antibody with azide - store at 2 to 8°C. Antibody without azide - store at -20 to -80°C. Antibody is stable for 24 months. Non-hazardous. No MSDS required.
Host	Mouse
Uniprot ID	P02538; P04259; P48668

Technical Details

Immunogen	Recombinant human keratin 6 protein
Predicted Reactive Species	Pig, Rabbit
Cross Reactivity	Does not cross-react with primate, avian or amphibian GR.
Isotype	IgG2a, kappa

Form	Liquid
Concentration	Purified antibody with BSA and azide at 200ug/ml
Purification	200ug/ml of antibody purified from Bioreactor Concentrate by Protein A/G.
Suggested Dilutions	<p>Dilute the sample so that the expected range of concentrations fall within the detection range of this kit.</p> <p>If the expected range of concentration is unknown, a pilot test should be conducted to decide the optimal dilution ratio for your samples.</p> <p>Some PubMed article(s) citing the expression level of this target are as follows:</p> <p>Boster Bio's internal QC testing used:</p> <p>Immunohistochemistry (Formalin-fixed) (0.1-0.2ug/ml for 30 min at RT)(Staining of formalin-fixed tissues requires heating tissue sections in 10mM Tris with 1mM EDTA, pH 9.0, for 45 min at 95&degC followed by cooling at RT for 20 minutes)</p> <p>Optimal dilution for a specific application should be determined.</p>

Anti-Cytokeratin 6 (KRT6) (Hyperproliferation-Related Keratin) Monoclonal Antibody (M30943) Images



Formalin-fixed, paraffin-embedded human Bladder Carcinoma stained with Anti-Cytokeratin 6 Monoclonal Antibody (KRT6/1702)

1 Publications Citing This Product

1. PubMed ID: 10.1016/j.actbio.2019.10.011, Biomimetic hydrogel for rapid and scar-free healing of skin wounds inspired by the healing process of oral mucosa

Visit bosterbio.com/anti-cytokeratin-6-krt6-hyperproliferation-related-keratin-antibody-m30943-boster.html to see all 1 publications.

Submit a product review to Biocompare.com

Submit a review of this product to Biocompare.com to receive a \$20 Amazon.com giftcard! Your reviews help your fellow scientists make the right decisions. Thank you for your contribution.



Anti-Cytokeratin 6 (KRT6) (Hyperproliferation-Related Keratin) Monoclonal Antibody