

## Anti-beta Tubulin

Catalog Number: M32657-1

### About Tubb5

Tubulin is the major constituent of microtubules. It binds two moles of GTP, one at an exchangeable site on the beta chain and one at a non-exchangeable site on the alpha chain.

### Overview

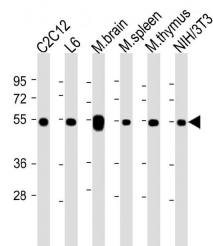
Product Name	Anti-beta Tubulin
Reactive Species	Mouse, Rat
Description	Boster Bio Anti-beta Tubulin (Catalog # M32657-1). Tested in WB, Flow Cytometry, IHC-P application(s). This antibody reacts with Mouse, Rat.
Application	Flow Cytometry, IHC-P, WB
Clonality	Polyclonal
Formulation	Purified polyclonal antibody supplied in PBS with 0.09% (W/V) sodium azide.
Storage Instructions	Maintain refrigerated at 2-8°C for up to 2 weeks. For long-term storage, store at -20°C in small aliquots to prevent freeze-thaw cycles.
Host	Rabbit
Uniprot ID	P99024

### Technical Details

Immunogen	This antibody is generated from a rabbit immunized with a KLH conjugated synthetic peptide between 46-78 amino acids from human.
Predicted Reactive Species	Bovine, C. elegans, Chicken, Drosophila, Hamster, Human, Monkey, Pig, Xenopus
Isotype	Rabbit IgG
Purification	This antibody is purified through a protein A column, followed by peptide affinity purification.
Suggested Dilutions	Dilute the sample so that the expected range of concentrations fall within the detection range of this kit. If the expected range of concentration is unknown, a pilot test should be conducted to decide the optimal dilution ratio for your samples. Some PubMed article(s) citing the expression level of this target are as follows: Boster Bio's internal QC testing used: WB: 1:2000 IHC-P: 1:25 FC: 1:25



## Anti-beta Tubulin (M32657-1) Images



All lanes : Anti-beta Tubulin at 1:2000 dilution

Lane 1: C2C12 whole cell lysate

Lane 2: L6 whole cell lysate

Lane 3: mouse brain lysate

Lane 4: mouse spleen whole cell lysate

Lane 5: mouse thymus lysate

Lane 6: NIH/3T3 whole cell lysate

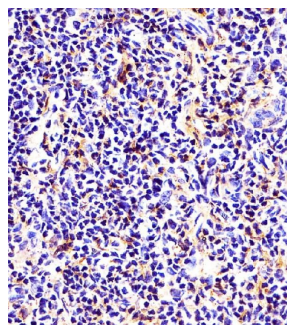
Lysates/proteins at 20 µg per lane.

Secondary

Goat Anti-Rabbit IgG, (H+L), Peroxidase conjugated at 1/10000 dilution.

Predicted band size : 50 kDa

Blocking/Dilution buffer: 5% NFDM/TBST.



M32657-1 staining beta Tubulin in mouse thymus tissue sections by Immunohistochemistry (IHC-P

-paraformaldehyde-fixed, paraffin-embedded sections).

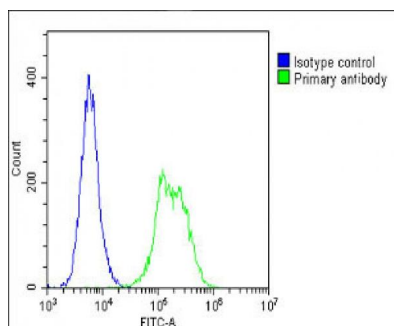
Tissue was fixed with formaldehyde and blocked with 3%

BSA for 0.5 hour at room temperature; antigen retrieval was

by heat mediation with a citrate buffer (pH6). Samples were

incubated with primary antibody (1/25) for 1 hours at 37°C.

A undiluted biotinylated goat polyvalent antibody was used as the secondary antibody.



Overlay histogram showing C2C12 cells stained with

M32657-1 (green line). The cells were fixed with 2% paraformaldehyde (10 min) and then permeabilized with 90% methanol for 10 min. The cells were then incubated in

2% bovine serum albumin to block non-specific protein-

protein interactions followed by the antibody (M32657-1,

1:25 dilution) for 60 min at 37°C. The secondary antibody

used was Goat-Anti-Rabbit IgG, DyLight® 488 Conjugated

Highly Cross-Adsorbed at 1/200 dilution for 40 min at 37°C.

Isotype control antibody (blue line) was rabbit IgG1

(1g/1x10<sup>6</sup> cells) used under the same conditions.

Acquisition of >10,000 events was performed.

## Submit a product review to Biocompare.com

Submit a review of this product to Biocompare.com to receive a \$20 Amazon.com giftcard! Your reviews help your fellow scientists make the right decisions. Thank you for your contribution.



Anti-beta Tubulin