

Anti-Episialin, EMA MUC1 Antibody (Monoclonal, GP1.4)

Catalog Number: MA1039

About MUC1

MUC1 is a large cell surface mucin glycoprotein expressed by most glandular and ductal epithelial cells and some hematopoietic cell lineages. It is expressed on most secretory epithelium, including mammary gland and some hematopoietic cells. It is expressed abundantly in lactating mammary glands and overexpressed abundantly in >90% breast carcinomas and metastases. Transgenic MUC1 has been shown to associate with all four ceBB receptors and localize with erbB1 (EGFR) in lactating glands. The MUC1 gene contains seven exons and produces several different alternatively spliced variants. The major expressed form of MUC1 uses all seven exons and is a type I transmembrane protein with a large extracellular tandem repeat domain. The tandem repeat domain is highly O glycosylated and alterations in glycosylation have been shown in epithelial cancer cells.

Overview

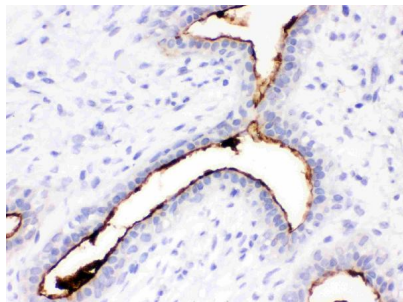
Product Name	Anti-Episialin, EMA MUC1 Antibody (Monoclonal, GP1.4)
Reactive Species	Human
Description	Boster Bio Anti-Episialin, EMA MUC1 Antibody (Monoclonal, GP1.4) catalog # MA1039. Tested in IHC applications. This antibody reacts with Human.
Application	IHC
Clonality	Monoclonal GP1.4
Formulation	Mouse ascites fluid, 1.2% sodium acetate, 2mg BSA, with 0.01mg NaN3 as preservative.
Storage Instructions	Store at -20°C for one year from date of receipt. After reconstitution, at 4°C for one month. It can also be aliquotted and stored frozen at -20°C for six months. Avoid repeated freeze-thaw cycles.
Host	Mouse
Uniprot ID	P15941

Technical Details

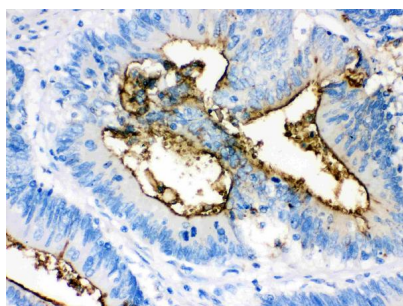
Immunogen	Human milk fat globule membranes.
Predicted Reactive Species	Monkey, Rabbit
Recommended Detection Systems	Boster recommends HRP Conjugated anti-Mouse IgG Super Vision Assay Kit (SV0001-1) for IHC(P) and IHC(F).
Cross Reactivity	No cross-reactivity with other proteins
Isotype	Mouse IgG1
Form	Lyophilized

Concentration	Adding 1 ml of PBS buffer will yield a concentration of 100 ug/ml.
Purification	Ascites
Suggested Dilutions	<p>Dilute the sample so that the expected range of concentrations fall within the detection range of this kit.</p> <p>If the expected range of concentration is unknown, a pilot test should be conducted to decide the optimal dilution ratio for your samples.</p> <p>Some PubMed article(s) citing the expression level of this target are as follows:</p> <p>Boster Bio's internal QC testing used:</p> <p>Immunohistochemistry (Paraffin-embedded Section), 2-4ug/ml, Human, By Heat</p> <p>Immunohistochemistry (Frozen Section), 2-4ug/ml, Human</p>

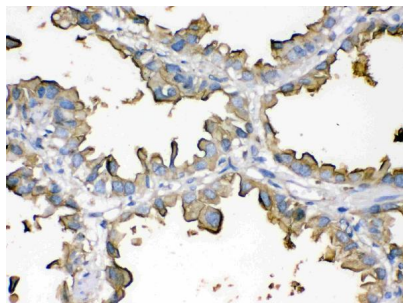
Anti-Episialin, EMA MUC1 Antibody (Monoclonal, GP1.4) (MA1039) Images



Anti-Episialin, EMA antibody, MA1039, IHC(P)
IHC(P): Human Mammary Cancer Tissue



Anti-Episialin, EMA antibody, MA1039, IHC(P)
IHC(P): Human Intestinal Cancer Tissue



Anti-Episialin, EMA antibody, MA1039, IHC(P)
IHC(P): Human Lung Cancer Tissue

2 Publications Citing This Product

1. PubMed ID: 27895759, Globose, cystic olfactory ensheathing cell tumor: A case report and literature review
2. PubMed ID: 23384043, Zhang J, Chen X, Shi G, Xie X, Liu H, Zhang X, Lai Y, Zuo Y, Chen Z, Liu S, Wang H. J Ovarian Res. 2013 Feb 6;6(1):9. Doi: 10.1186/1757-2215-6-9. Establishment Of A New Representative Model Of Human Ovarian Cancer In Mice.

Visit bosterbio.com/anti-episialin-ema-antibody-monoclonal-ma1039-boster.html to see all 2 publications.

Submit a product review to Biocompare.com

Submit a review of this product to Biocompare.com to receive a \$20 Amazon.com giftcard! Your reviews help your fellow scientists make the right decisions. Thank you for your contribution.



Anti-Episialin, EMA MUC1 Antibody (Monoclonal, GP1.4)