

Anti-Beta-Tubulin TUBB1 Antibody (Monoclonal, TUB 2.1)

Catalog Number: MA1112

About TUBB1

Tubulin beta (TUBB) was derived from its corresponding mRNA with a molecular weight of about 55,000. TUBB gene contains 4 exons and located in the HLA class I region at 6p21.3. Paclitaxel resistance in non-small-cell lung cancer associated with beta-tubulin gene mutations.

Overview

Product Name	Anti-Beta-Tubulin TUBB1 Antibody (Monoclonal, TUB 2.1)
Reactive Species	Human, Mouse, Rat
Description	Boster Bio Anti-Beta-Tubulin TUBB1 Antibody (Monoclonal, TUB 2.1) catalog # MA1112. Tested in IF, IHC, ICC, WB applications. This antibody reacts with Human, Mouse, Rat.
Application	IF, IHC, ICC, WB
Clonality	Monoclonal TUB 2.1
Formulation	Mouse ascites fluid, 1.2% sodium acetate, 2mg BSA, with 0.01mg NaN ₃ as preservative.
Storage Instructions	Store at -20°C for one year from date of receipt. After reconstitution, at 4°C for one month. It can also be aliquotted and stored frozen at -20°C for six months. Avoid repeated freeze-thaw cycles.
Host	Mouse
Uniprot ID	Q9H4B7

Technical Details

Immunogen	Tubulin from rat brain.
Predicted Reactive Species	Chicken
Recommended Detection Systems	Boster recommends Enhanced Chemiluminescent Kit with anti-Mouse IgG (EK1001) for Western blot, and HRP Conjugated anti-Mouse IgG Super Vision Assay Kit (SV0001-1) for IHC(P) and ICC.
Cross Reactivity	No cross-reactivity with other proteins
Isotype	Mouse IgG1
Form	Lyophilized
Concentration	Adding 1 ml of PBS buffer will yield a concentration of 100 ug/ml.
Purification	Ascites
Suggested Dilutions	Dilute the sample so that the expected range of concentrations fall within the detection range of this

kit.

If the expected range of concentration is unknown, a pilot test should be conducted to decide the optimal dilution ratio for your samples.

Some PubMed article(s) citing the expression level of this target are as follows:

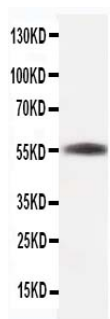
Boster Bio's internal QC testing used:

Immunohistochemistry (Paraffin-embedded Section), 0.5-1ug/ml, Human, mouse, rat, By Heat

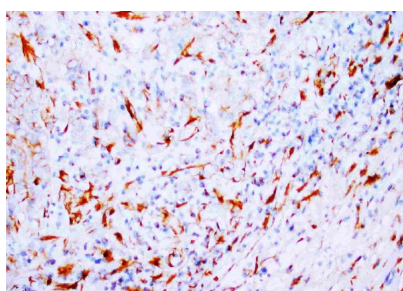
Western blot, 2ug/ml, Human, mouse, rat

Immunocytochemistry/Immunofluorescence, 5ug/ml, Human

Anti-Beta-Tubulin TUBB1 Antibody (Monoclonal, TUB 2.1) (MA1112) Images



Anti-beta-Tubulin antibody (monoclonal), MA1112, Western blotting
WB: Rat Skeletal Muscle Tissue Lysate



Anti-beta-Tubulin antibody (monoclonal), MA1112, IHC(P)
IHC(P): Human Mammary Cancer Tissue

19 Publications Citing This Product

1. PubMed ID: 10.3892/ol.2016.4690, Label-retaining assay enriches tumor-initiating cells in glioblastoma spheres cultivated in serum-free medium
2. PubMed ID: -, Han Zhang, Huaishan Wang, Fei Gao, Jia Yang, Yi Xu, Yi Fu, Menghua Cai, Xue Zhang, Qi Yang, Kexin Tong, Yu Hu, Hui Chen, Chao Ma, Wei He, Jianmin Zhang, TSPO Deficiency Accelerates Amyloid Pathology and Neuroinflammation by Impairing Microglial Phagocytosis, Neurobiology of Aging, 2021, ISSN 0197-4580, <https://doi.org/10.1016/j.neurobiolaging.2021.06.020>.
3. PubMed ID: -, Shi, W., Que, Y., Zhang, X. et al. Functional tissue-engineered bone-like graft made of a fibrin scaffold and TG2 gene-modified EMSCs for bone defect repair. NPG Asia Mater 13, 28 (2021). <https://doi.org/10.1038/s41427-021-00297-w>

Visit bosterbio.com/anti-beta-tubulin-antibody-monoclonal-ma1112-boster.html to see all 19 publications.

Submit a product review to Biocompare.com

Submit a review of this product to Biocompare.com to receive a \$20 Amazon.com giftcard! Your reviews help your fellow scientists make the right decisions. Thank you for your contribution.



Anti-Beta-Tubulin TUBB1 Antibody (Monoclonal, TUB 2.1)