

## Anti-Renilla Luciferase Rabbit Monoclonal Antibody

Catalog Number: MT0022

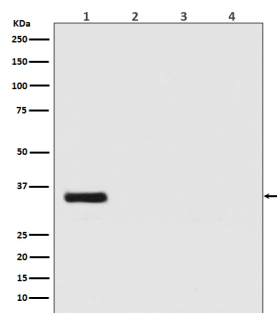
### Overview

Product Name	Anti-Renilla Luciferase Rabbit Monoclonal Antibody
Reactive Species	Renilla Luciferase
Description	Boster Bio Anti-Renilla Luciferase Rabbit Monoclonal Antibody catalog # MT0022. Tested in WB, ICC/IF applications. This antibody reacts with Renilla Luciferase.
Application	IF, ICC, WB
Clonality	Monoclonal DAC-18
Formulation	Rabbit IgG in phosphate buffered saline, pH 7.4, 150mM NaCl, 0.02% sodium azide and 50% glycerol, 0.4-0.5mg/ml BSA.
Storage Instructions	Store at -20°C for one year. For short term storage and frequent use, store at 4°C for up to one month. Avoid repeated freeze-thaw cycles.
Host	Rabbit
Uniprot ID	P27652

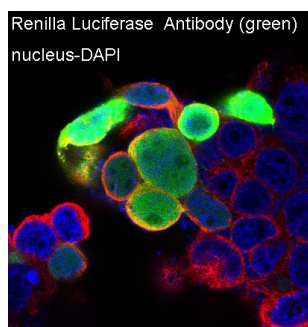
### Technical Details

Immunogen	A synthesized peptide derived from Renilla Luciferase
Isotype	Rabbit IgG
Form	Liquid
Concentration	Actual concentration vary by lot. Use suggested dilution ratio to decide dilution procedure.
Purification	Affinity-chromatography
Suggested Dilutions	<p>Dilute the sample so that the expected range of concentrations fall within the detection range of this kit.</p> <p>If the expected range of concentration is unknown, a pilot test should be conducted to decide the optimal dilution ratio for your samples.</p> <p>Some PubMed article(s) citing the expression level of this target are as follows:</p> <p>Boster Bio's internal QC testing used:</p> <p>WB 1:500-1:2000</p> <p>ICC/IF 1:50-1:200</p>

## Anti-Renilla Luciferase Rabbit Monoclonal Antibody (MT0022) Images



Western blot analysis of Renilla Luciferase expression in (1) Renilla Luciferase transfected 293 cell lysate; (2) HeLa cell lysate; (3) NIH/3T3 cell lysate; (4) C6 cell lysate.



Immunofluorescent analysis of 293 cells transfected with Renilla Luciferase, using Renilla Luciferase Antibody .

### Submit a product review to Biocompare.com

Submit a review of this product to Biocompare.com to receive a \$20 Amazon.com giftcard! Your reviews help your fellow scientists make the right decisions. Thank you for your contribution.



Anti-Renilla Luciferase Rabbit Monoclonal Antibody