

## Anti-Phospho-p53 (Ser392) TP53 Antibody

Catalog Number: P00001

### About TP53

p53 has a well established role in blocking the proliferative action of damaged cells and acting in essence as an anticancer agent (Sharpless and DePinho, 2002; Yin et al., 1992). It has been called the guardian of the genome (Lane, 1992). Phosphorylation of Ser-392 in p53 is associated with formation of human tumors (Saito et al., 2003; Pise-Masison et al., 1998; Kim et al., 2004). In addition, p53 has been linked to effects of aging and oxidative stress (Sharpless and DePinho, 2002). An increase in p53 has also been linked to deficits in LTP and learning and memory (Jiang et al., 1998)

### Overview

Product Name	Anti-Phospho-p53 (Ser392) TP53 Antibody
Reactive Species	Human, Rat
Description	Boster Bio Anti-Phospho-p53 (Ser392) TP53 Antibody (Catalog # P00001). Tested in WB applications. This antibody reacts with Human, Rat.
Application	WB
Clonality	Polyclonal JE44-80
Formulation	10 mM HEPES (pH 7.5), 150 mM NaCl, 100 µg per ml BSA and 50% glycerol.
Storage Instructions	Storage at -20°C is recommended, as aliquots may be taken without freeze/thawing due to presence of 50% glycerol. Stable for at least 1 year at -20°C. After date of receipt, stable for at least 1 year at -20°C.
Host	Rabbit
Uniprot ID	P04637

### Technical Details

Immunogen	Synthetic phospho-peptide corresponding to amino acid residues surrounding Ser392 of human p53, conjugated to keyhole limpet hemocyanin (KLH). Immunogen species is Human.
Cross Reactivity	No cross reactivity with other proteins.
Isotype	IgG
Form	Liquid
Concentration	0.5-1mg/ml, actual concentration vary by lot. Use suggested dilution ratio to decide dilution procedure.
Purification	Prepared from pooled rabbit serum by affinity purification via sequential chromatography on phospho and non-phosphopeptide affinity columns.

**Suggested Dilutions**

Dilute the sample so that the expected range of concentrations fall within the detection range of this kit.

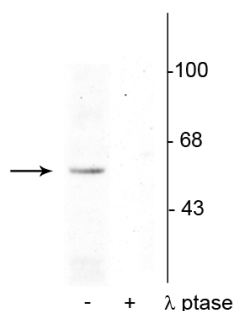
If the expected range of concentration is unknown, a pilot test should be conducted to decide the optimal dilution ratio for your samples.

Some PubMed article(s) citing the expression level of this target are as follows:

Boster Bio's internal QC testing used:

WB: 1:1000

## Anti-Phospho-p53 (Ser392) TP53 Antibody (P00001) Images



Western blot of rat brain nuclear fraction lysate showing specific immunolabeling of the ~53 kDa p53 phosphorylated at Ser<sup>392</sup> in the first lane (-). Phosphospecificity is shown in the second lane (+) where the immunolabeling is completely eliminated by blot treatment with lambda phosphatase (gamma-Ptase, 1200 units for 30 minutes).

## 4 Publications Citing This Product

1. PubMed ID: 26807166, Effects of human umbilical cord mesenchymal stem cell transplantation combined with minimally invasive hematoma aspiration on intracerebral hemorrhage in rats.
2. PubMed ID: 26877779, P-glycoprotein Mediates Postoperative Peritoneal Adhesion Formation by Enhancing Phosphorylation of the Chloride Channel-3
3. PubMed ID: 24944617, Effect of ligustilide on Ang II-induced hypertrophy in cardiomyocytes and the potential mechanisms

Visit [bosterbio.com/anti-p53-ser392-antibody-phospho-specific-p00001-boster.html](http://bosterbio.com/anti-p53-ser392-antibody-phospho-specific-p00001-boster.html) to see all 4 publications.

## Submit a product review to Biocompare.com

Submit a review of this product to Biocompare.com to receive a \$20 Amazon.com giftcard! Your reviews help your fellow scientists make the right decisions. Thank you for your contribution.



Anti-Phospho-p53 (Ser392) TP53 Antibody