

Anti-Phospho-AKT (Thr342) AKT1 Antibody

Catalog Number: P00024-1

About AKT1

The serine/threonine kinase Akt also known as protein kinase B (PKB) or Rac, plays a crucial role in controlling many diverse and important cellular functions such as cell survival and glycogen metabolism (Hajdуч et al., 2001 and Nicholson & Anderson, 2002). Three isoforms (alpha, beta, and gamma) have been identified that can be activated rapidly in response to insulin and growth factors in a phosphoinositide 3-kinase (PI3K)-dependent fashion (Hajdуч et al., 2003). Phosphorylation of Aktalpha occurs at two specific regulatory sites in Drosophila, one localized in the kinase domain, Thr342, and the other in the C-terminal regulatory domain, Ser505: these two activation sites are homologous to mammalian Ser473 and Thr308 respectively (Powell et al., 2004).

Overview

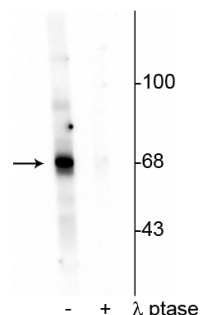
Product Name	Anti-Phospho-AKT (Thr342) AKT1 Antibody
Reactive Species	Drosophila
Description	Boster Bio Anti-Phospho-AKT (Thr342) AKT1 Antibody (Catalog # P00024-1). Tested in WB applications. This antibody reacts with Drosophila.
Application	WB
Clonality	Polyclonal JE44-80
Formulation	10 mM HEPES (pH 7.5), 150 mM NaCl, 100 µg per ml BSA and 50% glycerol.
Storage Instructions	Storage at -20°C is recommended, as aliquots may be taken without freeze/thawing due to presence of 50% glycerol. Stable for at least 1 year at -20°C. After date of receipt, stable for at least 1 year at -20°C.
Host	Rabbit
Uniprot ID	Q8INB9

Technical Details

Immunogen	Synthetic phospho-peptide corresponding to amino acid residues surrounding Thr342 of Drosophila AKT, conjugated to keyhole limpet hemocyanin (KLH). Immunogen species is Drosophila.
Predicted Reactive Species	Monkey
Cross Reactivity	No cross reactivity with other proteins.
Isotype	IgG
Form	Liquid
Concentration	0.5-1mg/ml, actual concentration vary by lot. Use suggested dilution ratio to decide dilution

	procedure.
Purification	Prepared from pooled rabbit serum by affinity purification via sequential chromatography on phospho and non-phosphopeptide affinity columns.
Suggested Dilutions	<p>Dilute the sample so that the expected range of concentrations fall within the detection range of this kit.</p> <p>If the expected range of concentration is unknown, a pilot test should be conducted to decide the optimal dilution ratio for your samples.</p> <p>Some PubMed article(s) citing the expression level of this target are as follows:</p> <p>Boster Bio's internal QC testing used:</p> <p>WB: 1:500</p>

Anti-Phospho-AKT (Thr342) AKT1 Antibody (P00024-1) Images



Western blot of Drosophila lysate showing specific labeling of the ~68 kDa AKT protein phosphorylated at Thr342 in the first lane (-). Phosphospecificity is shown in the second lane (+) where the immunolabeling is completely eliminated by blot treatment with lambda phosphatase (gamma-Ptase, 1200 units for 30 minutes).

Submit a product review to Biocompare.com

Submit a review of this product to Biocompare.com to receive a \$20 Amazon.com giftcard! Your reviews help your fellow scientists make the right decisions. Thank you for your contribution.



Anti-Phospho-AKT (Thr342) AKT1 Antibody