

## Anti-Phospho-MeCP2 (Ser80) Antibody

Catalog Number: P00047-1

### About MECP2

MECP2 (Methyl-CpG Binding Protein 2) is a chromosomal protein that binds to methylated DNA. It can bind specifically to a single methyl-CpG pair and is not influenced by sequences flanking the methyl-CpGs. MECP2 has been shown to mediate transcriptional repression through interaction with histone deacetylase and the corepressor SIN3A. Defects in MECP2 are the cause of Rett syndrome (RTT). RTT is an X-linked dominant disease, it is a progressive neurologic developmental disorder and one of the most common causes of mental retardation in females. Recent studies have reported a new phosphorylation site at Ser-80. Phosphorylation and dephosphorylation of this site may be involved in modulating the dynamic function of MECP2 in neurons transiting between resting and active states within neural circuits that underlie behaviors. (Tao et al., 2009)

### Overview

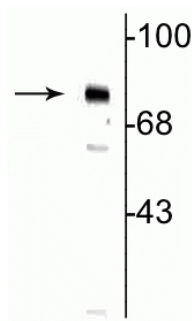
Product Name	Anti-Phospho-MeCP2 (Ser80) Antibody
Reactive Species	Human, Mouse, Rat
Description	Boster Bio Anti-Phospho-MeCP2 (Ser80) Antibody (Catalog # P00047-1). Tested in WB, IHC applications. This antibody reacts with Human, Mouse, Rat.
Application	IHC, WB
Clonality	Polyclonal JE44-80
Formulation	Serum
Storage Instructions	Recommended that the undiluted antibody be aliquoted into smaller working volumes (10-30 uL/vial depending on usage) upon arrival and stored long term at -20° C or -80° C, while keeping a working aliquot stored at 4° C for short term. Avoid freeze/thaw cycles. Stable for at least 1 year. After date of receipt, stable for at least 1 year at -20°C.
Host	Rabbit
Uniprot ID	P51608

### Technical Details

Immunogen	Synthetic phospho-peptide corresponding to amino acid residues surrounding Ser80 of human MeCP2, conjugated to keyhole limpet hemocyanin (KLH). Immunogen species is Human.
Predicted Reactive Species	Human
Cross Reactivity	No cross reactivity with other proteins.
Isotype	IgG
Form	Liquid

Concentration	0.5-1mg/ml, actual concentration vary by lot. Use suggested dilution ratio to decide dilution procedure.
Purification	Serum
Suggested Dilutions	<p>Dilute the sample so that the expected range of concentrations fall within the detection range of this kit.</p> <p>If the expected range of concentration is unknown, a pilot test should be conducted to decide the optimal dilution ratio for your samples.</p> <p>Some PubMed article(s) citing the expression level of this target are as follows:</p> <p>Boster Bio's internal QC testing used:</p> <p>WB: 1:1000</p> <p>IHC: 1:100-1:250</p>

## Anti-Phospho-MeCP2 (Ser80) Antibody (P00047-1) Images



Western blot of neonatal rat brain showing specific immunolabeling of the ~75 kDa MeCP2 protein phosphorylated at Ser<sup>80</sup>.

### Submit a product review to Biocompare.com

Submit a review of this product to Biocompare.com to receive a \$20 Amazon.com giftcard! Your reviews help your fellow scientists make the right decisions. Thank you for your contribution.



Anti-Phospho-MeCP2 (Ser80) Antibody