

Anti-Phospho-Smad3 (S423 + S425) Rabbit Monoclonal Antibody

Catalog Number: P00059-1

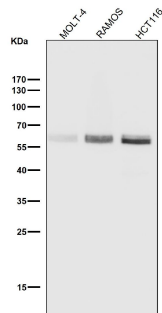
Overview

| | |
|----------------------|--|
| Product Name | Anti-Phospho-Smad3 (S423 + S425) Rabbit Monoclonal Antibody |
| Reactive Species | Human, Mouse |
| Description | Boster Bio Anti-Phospho-Smad3 (S423 + S425) Rabbit Monoclonal Antibody catalog # P00059-1. Tested in WB, IHC, ICC/IF applications. This antibody reacts with Human, Mouse. |
| Application | IF, IHC, ICC, WB |
| Clonality | Monoclonal AHO-19 |
| Formulation | Rabbit IgG in phosphate buffered saline, pH 7.4, 150mM NaCl, 0.02% sodium azide and 50% glycerol, 0.4-0.5mg/ml BSA. |
| Storage Instructions | Store at -20°C for one year. For short term storage and frequent use, store at 4°C for up to one month. Avoid repeated freeze-thaw cycles. |
| Host | Rabbit |
| Uniprot ID | P84022 |

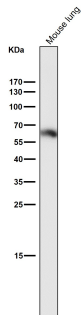
Technical Details

| | |
|---------------------|---|
| Immunogen | A synthesized peptide derived from human Phospho-Smad3 (S423 + S425) |
| Isotype | Rabbit IgG |
| Form | Liquid |
| Concentration | Actual concentration vary by lot. Use suggested dilution ratio to decide dilution procedure. |
| Purification | Affinity-chromatography |
| Suggested Dilutions | <p>Dilute the sample so that the expected range of concentrations fall within the detection range of this kit.</p> <p>If the expected range of concentration is unknown, a pilot test should be conducted to decide the optimal dilution ratio for your samples.</p> <p>Some PubMed article(s) citing the expression level of this target are as follows:</p> <p>Boster Bio's internal QC testing used:</p> <p>WB 1:500-1:2000</p> <p>IHC 1:50-1:200</p> <p>ICC/IF 1:50-1:200</p> |

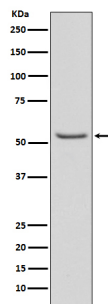
Anti-Phospho-Smad3 (S423 + S425) Rabbit Monoclonal Antibody (P00059-1) Images



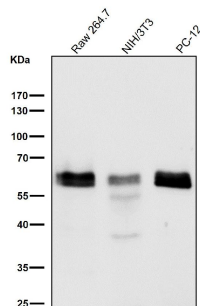
All lanes use the Antibody at 1:1K dilution for 1 hour at room temperature.



All lanes use the Antibody at 1:1K dilution for 1 hour at room temperature.

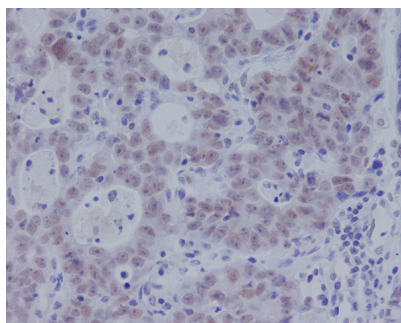
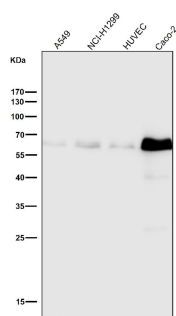


Western blot analysis of Phospho-Smad3 (S423/S425) expression in A549 cell lysate treated with TGF- β 1.

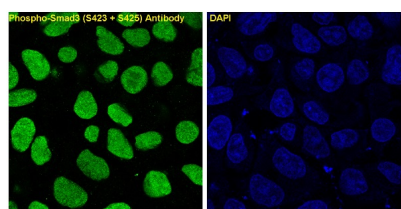


All lanes use the Antibody at 1:1K dilution for 1 hour at room temperature.

All lanes use the Antibody at 1:1K dilution for 1 hour at room temperature.



Immunohistochemical analysis of paraffin-embedded human gastric adenocarcinoma, using Phospho-Smad3 (S423 + S425) Antibody.



Immunofluorescent analysis of A549 cells treated with TGFbeta , using Phospho-Smad3 (S423 + S425) Antibody.

1 Publications Citing This Product

1. PubMed ID: 25356121, Shi K, Jiang J, Ma T, Xie J, Duan L, Chen R, Song P, Yu Z, Liu C, Zhu Q, Zheng J. Int J Clin Exp Med. 2014 Sep 15;7(9):2645-50. Ecollection 2014. Dexamethasone Attenuates Bleomycin-Induced Lung Fibrosis In Mice Through Tgf-??, Smad3 And Jak-Stat P...

Visit bosterbio.com/anti-phospho-smad3-s423-s425-rabbit-monoclonal-antibody-p00059-1-boster.html to see all 1 publications.

Submit a product review to Biocompare.com

Submit a review of this product to Biocompare.com to receive a \$20 Amazon.com giftcard! Your reviews help your fellow scientists make the right decisions. Thank you for your contribution.



Anti-Phospho-Smad3 (S423 + S425) Rabbit Monoclonal Antibody