

## Anti-Phospho-ABL1/2 (Tyr393/439) Antibody

Catalog Number: P00133

### About ABL1

Regulates cytoskeleton remodeling during cell differentiation, cell division and cell adhesion. Localizes to dynamic actin structures, and phosphorylates CRK and CRKL, DOK1, and other proteins controlling cytoskeleton dynamics. Regulates DNA repair potentially by activating the proapoptotic pathway when the DNA damage is too severe to be repaired. Phosphorylates PSMA7 that leads to an inhibition of proteasomal activity and cell cycle transition blocks.

Wang, J.Y. et al. (2000) Oncogene 19, 5643-5650.

Danial, N.N. et al. (2000) Oncogene 19, 2523-2531.

Brasher, B.B. et al. (2000) J. Biol. Chem. 275, 35631-35637.

Pluk, H. et al. (2002) Cell 108, 247-259.

### Overview

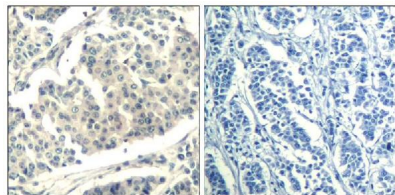
Product Name	Anti-Phospho-ABL1/2 (Tyr393/439) Antibody
Reactive Species	Human, Mouse
Description	Boster Bio Anti-Phospho-ABL1/2 (Tyr393/439) Antibody (Catalog # P00133). Tested in WB, IHC, IF applications. This antibody reacts with Human, Mouse.
Application	IF, IHC, WB
Clonality	Polyclonal
Formulation	Supplied at 1.0mg/mL in phosphate buffered saline (without Mg <sup>2+</sup> and Ca <sup>2+</sup> ), pH 7.4, 150mM NaCl, 0.02% sodium azide and 50% glycerol.
Storage Instructions	Store at -20°C for one year. For short term storage and frequent use, store at 4°C for up to one month. Avoid repeated freeze-thaw cycles.
Host	Rabbit
Uniprot ID	P00519

### Technical Details

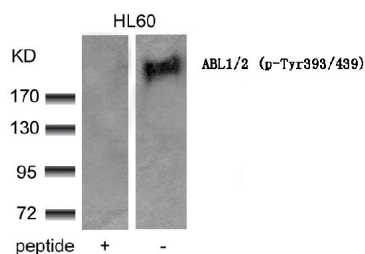
Immunogen	Peptide sequence around phosphorylation site of tyrosine 393/439 (D-T-Y(p)-T-A) derived from Human ABL1/2.
Predicted Reactive Species	Bovine, Chicken, Xenopus Laevis, Xenopus Tropicalis, Zebrafish
Cross Reactivity	No cross reactivity with other proteins.
Isotype	IgG

Form	Liquid
Concentration	1 mg/ml
Purification	Antibodies were produced by immunizing rabbits with synthetic phosphopeptide and KLH conjugates. Antibodies were purified by affinity-chromatography using epitope-specific phosphopeptide. Non-phospho specific antibodies were removed by chromatography using non-phosphopeptide.
Suggested Dilutions	<p>Dilute the sample so that the expected range of concentrations fall within the detection range of this kit.</p> <p>If the expected range of concentration is unknown, a pilot test should be conducted to decide the optimal dilution ratio for your samples.</p> <p>Some PubMed article(s) citing the expression level of this target are as follows:</p> <p>Boster Bio's internal QC testing used:</p> <p>Predicted MW: 210kd</p> <p>Western blotting: 1:500~1:1000</p> <p>Immunohistochemistry: 1:50~1:100</p> <p>Immunofluorescence: 1:100~1:200</p>

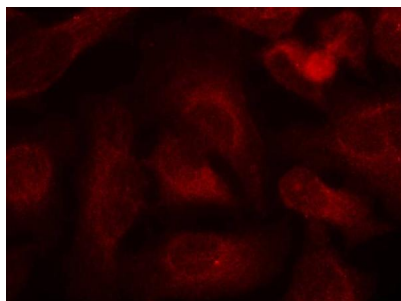
## Anti-Phospho-ABL1/2 (Tyr393/439) Antibody (P00133) Images



Immunohistochemical analysis of paraffin-embedded human breast carcinoma tissue using ABL1/2(Phospho-Tyr393/439) antibody P00133(left) or the same antibody preincubated with blocking peptide(right).



Western blot analysis of extracts from HL60 cells using ABL1/2(phospho-Tyr393/439) antibody P00133 and the same antibody preincubated with blocking peptide.



Immunofluorescence staining of methanol-fixed Hela cells using ABL1/2(phospho-Tyr393/439) antibody P00133.

## Submit a product review to Biocompare.com

Submit a review of this product to Biocompare.com to receive a \$20 Amazon.com giftcard! Your reviews help your fellow scientists make the right decisions. Thank you for your contribution.



Anti-Phospho-ABL1/2 (Tyr393/439) Antibody