

Anti-Phospho-Polo-Like Kinase Kinase (Ser482,486,490) PLK1 Antibody

Catalog Number: P00182-1

About PLKK1

Considerable evidence indicates that a polo-like kinase (PLK) plays an important role in cell cycle regulation. PLK is also required for bipolar spindle formation, activation of the anaphase-promoting complex/cyclosome, and cytokinesis. Recent work led to the identification of a PLKK that is thought to be responsible for activation of PLK. Recent work (Erikson, et al., 2004) has shown that PLKK is in turn activated by phosphorylation at three sites (Ser-482, Ser-486 and Ser-490). Thus activation of PLK is thought to involve a kinase cascade involving the phosphorylation of Ser-482,486,490 in PLKK.

Overview

Product Name	Anti-Phospho-Polo-Like Kinase Kinase (Ser482,486,490) PLK1 Antibody
Reactive Species	Rat, Xenopus
Description	Boster Bio Anti-Phospho-Polo-Like Kinase Kinase (Ser482, 486, 490) PLK1 Antibody (Catalog # P00182-1). Tested in WB applications. This antibody reacts with Rat, Xenopus.
Application	WB
Clonality	Polyclonal
Formulation	10 mM HEPES (pH 7.5), 150 mM NaCl, 100 µg per ml BSA and 50% glycerol.
Storage Instructions	Storage at -20°C is recommended, as aliquots may be taken without freeze/thawing due to presence of 50% glycerol. Stable for at least 1 year at -20°C. After date of receipt, stable for at least 1 year at -20°C.
Host	Rabbit
Uniprot ID	B7ZR30

Technical Details

Immunogen	Synthetic phospho-peptide corresponding to amino acid residues surrounding Ser482/486/490 of Xenopus polo-like kinase kinase (PLKK), conjugated to keyhole limpet hemocyanin (KLH). Immunogen species is Xenopus.
Predicted Reactive Species	Human, Mouse, Zebrafish
Isotype	IgG
Form	Liquid
Concentration	0.5-1mg/ml, actual concentration vary by lot. Use suggested dilution ratio to decide dilution procedure.
Purification	Prepared from rabbit serum by affinity purification via sequential chromatography on phospho- and

dephosphopeptide affinity columns.

Suggested Dilutions

Dilute the sample so that the expected range of concentrations fall within the detection range of this kit.

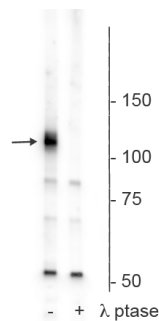
If the expected range of concentration is unknown, a pilot test should be conducted to decide the optimal dilution ratio for your samples.

Some PubMed article(s) citing the expression level of this target are as follows:

Boster Bio's internal QC testing used:

WB: 1:1000

Anti-Phospho-Polo-Like Kinase Kinase (Ser482,486,490) PLK1 Antibody (P00182-1) Images



Western blot of rat hippocampal membrane lysate showing specific immunolabeling of the ~120 kDa Polo-Like Kinase Kinase phosphorylated at Ser^{482,486,490} in the first lane (-). Phosphospecificity is shown in the second lane (+) where the immunolabeling is completely eliminated by blot treatment with lambda phosphatase (gamma-Ptase, 1200 units overnight).

Submit a product review to Biocompare.com

Submit a review of this product to Biocompare.com to receive a \$20 Amazon.com giftcard! Your reviews help your fellow scientists make the right decisions. Thank you for your contribution.



Anti-Phospho-Polo-Like Kinase Kinase (Ser482,486,490) PLK1 Antibody