

Anti-Phospho-Alpha Synuclein (Ser129) SNCA Antibody

Catalog Number: P00215

About SNCA

Alpha-synuclein is a presynaptic neuronal protein that is thought to be involved in the formation of SNARE complexes. Most significantly, aggregated alphasynuclein is one of the major components found in the Lewy bodies that occur in Parkinson's disease (PD) and other neurodegenerative disorders (Okochi et al., 2000). Mutation of the alpha-synuclein gene is associated with familial forms of PD (Newmann et al., 2002). Recent evidence suggests that phosphorylation of alpha-synuclein at Ser129 plays a role in the formation of inclusions in PD (Smith et al., 2005; Masliah et al., 2005).

Overview

Product Name	Anti-Phospho-Alpha Synuclein (Ser129) SNCA Antibody
Reactive Species	Human, Mouse, Rat
Description	Boster Bio Anti-Phospho-Alpha Synuclein (Ser129) SNCA Antibody (Catalog # P00215). Tested in WB, IHC applications. This antibody reacts with Human, Mouse, Rat.
Application	IHC, WB
Clonality	Polyclonal
Formulation	10 mM HEPES (pH 7.5), 150 mM NaCl, 100 µg per ml BSA and 50% glycerol.
Storage Instructions	Storage at -20°C is recommended, as aliquots may be taken without freeze/thawing due to presence of 50% glycerol. Stable for at least 1 year at -20°C. After date of receipt, stable for at least 1 year at -20°C.
Host	Rabbit
Uniprot ID	P37377

Technical Details

Immunogen	Synthetic phospho-peptide corresponding to amino acid residues surrounding Ser129 of rat alpha-synuclein, conjugated to keyhole limpet hemocyanin (KLH). Immunogen species is Rat.
Predicted Reactive Species	Bovine, Canine, Primate
Isotype	IgG
Form	Liquid
Concentration	0.5-1mg/ml, actual concentration vary by lot. Use suggested dilution ratio to decide dilution procedure.
Purification	Prepared from pooled rabbit serum by affinity purification via sequential chromatography on phospho and non-phosphopeptide affinity columns.

Suggested Dilutions

Dilute the sample so that the expected range of concentrations fall within the detection range of this kit.

If the expected range of concentration is unknown, a pilot test should be conducted to decide the optimal dilution ratio for your samples.

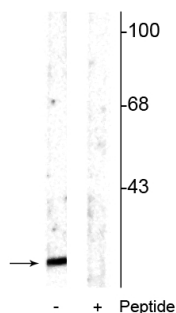
Some PubMed article(s) citing the expression level of this target are as follows:

Boster Bio's internal QC testing used:

WB: 1:1000

IHC: 1:200

Anti-Phospho-Alpha Synuclein (Ser129) SNCA Antibody (P00215) Images



Western blot of rat cortical lysate showing specific immunolabeling of the ~15 kDa alpha synuclein protein phosphorylated at Ser¹²⁹ in the first lane (-). Phosphospecificity is shown in the second lane (+) where the immunolabeling is blocked by the phosphopeptide used as antigen but not by the corresponding non-phosphopeptide (not shown).

Submit a product review to Biocompare.com

Submit a review of this product to Biocompare.com to receive a \$20 Amazon.com giftcard! Your reviews help your fellow scientists make the right decisions. Thank you for your contribution.



Anti-Phospho-Alpha Synuclein (Ser129) SNCA Antibody