

## Anti-Phospho-LRRK2 (S935) Rabbit Monoclonal Antibody

Catalog Number: P00221

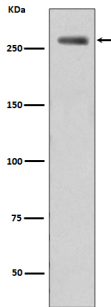
### Overview

Product Name	Anti-Phospho-LRRK2 (S935) Rabbit Monoclonal Antibody
Reactive Species	Human, Mouse
Description	Boster Bio Anti-Phospho-LRRK2 (S935) Rabbit Monoclonal Antibody catalog # P00221. Tested in WB, ICC/IF applications. This antibody reacts with Human, Mouse.
Application	IF, ICC, WB
Clonality	Monoclonal BFH-12
Formulation	Rabbit IgG in phosphate buffered saline, pH 7.4, 150mM NaCl, 0.02% sodium azide and 50% glycerol, 0.4-0.5mg/ml BSA.
Storage Instructions	Store at -20°C for one year. For short term storage and frequent use, store at 4°C for up to one month. Avoid repeated freeze-thaw cycles.
Host	Rabbit
Uniprot ID	Q5S007

### Technical Details

Immunogen	A synthesized peptide derived from human Phospho-LRRK2 (S935)
Isotype	Rabbit IgG
Form	Liquid
Concentration	Actual concentration vary by lot. Use suggested dilution ratio to decide dilution procedure.
Purification	Affinity-chromatography
Suggested Dilutions	Dilute the sample so that the expected range of concentrations fall within the detection range of this kit. If the expected range of concentration is unknown, a pilot test should be conducted to decide the optimal dilution ratio for your samples. Some PubMed article(s) citing the expression level of this target are as follows: Boster Bio's internal QC testing used: WB 1:500-1:1000 ICC/IF 1:50-1:200

## Anti-Phospho-LRRK2 (S935) Rabbit Monoclonal Antibody (P00221) Images



Western blot analysis of Filamin A phosphorylation expression in WT-LRRK2 cell lysate treated LRRK2.

### Submit a product review to Biocompare.com

Submit a review of this product to Biocompare.com to receive a \$20 Amazon.com giftcard! Your reviews help your fellow scientists make the right decisions. Thank you for your contribution.



Anti-Phospho-LRRK2 (S935) Rabbit Monoclonal Antibody