

Anti-Phospho-Merlin (Ser518) NF2 Antibody

Catalog Number: P00279-1

About NF2

Probable regulator of the Hippo/SWH (Sav/Wts/Hpo) signaling pathway, a signaling pathway that plays a pivotal role in tumor suppression by restricting proliferation and promoting apoptosis. Along with WWC1 can synergistically induce the phosphorylation of LATS1 and LATS2 and can probably function in the regulation of the Hippo/SWH (Sav/Wts/Hpo) signaling pathway. May act as a membrane stabilizing protein. May inhibit PI3 kinase by binding to AGAP2 and impairing its stimulating activity.

Guang-Hui Xiao, et al. (2005) Mol. Cell. Biol ; 25: 2384 - 2394.

Hi-Su Yang, et al. (2006) Cancer Res ; 66: 2708 - 2715.

R Bohni, et al. (1994) J. Biol. Chem ; 269: 14541 - 14545.

Adam J. Ratner, et al. (2001) J. Biol. Chem ; 276: 19267 - 19275.

Overview

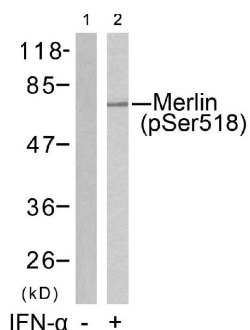
Product Name	Anti-Phospho-Merlin (Ser518) NF2 Antibody
Reactive Species	Human, Mouse, Rat
Description	Boster Bio Anti-Phospho-Merlin (Ser518) NF2 Antibody (Catalog # P00279-1). Tested in WB, IF applications. This antibody reacts with Human, Mouse, Rat.
Application	IF, WB
Clonality	Polyclonal
Formulation	Supplied at 1.0mg/mL in phosphate buffered saline (without Mg ²⁺ and Ca ²⁺), pH 7.4, 150mM NaCl, 0.02% sodium azide and 50% glycerol.
Storage Instructions	Store at -20°C for one year. For short term storage and frequent use, store at 4°C for up to one month. Avoid repeated freeze-thaw cycles.
Host	Rabbit
Uniprot ID	P35240

Technical Details

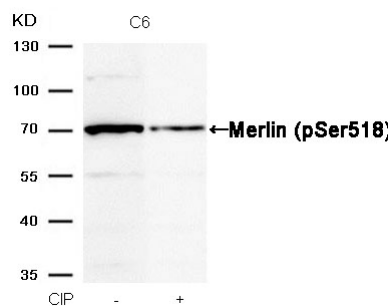
Immunogen	Peptide sequence around phosphorylation site of serine 518 (R-L-S(p)-M-E) derived from Human Merlin.
Predicted Reactive Species	Bovine, Chicken, Xenopus Laevis, Xenopus Tropicalis, Zebrafish
Cross Reactivity	No cross reactivity with other proteins.
Isotype	IgG

Form	Liquid
Concentration	1 mg/ml
Purification	Antibodies were produced by immunizing rabbits with synthetic phosphopeptide and KLH conjugates. Antibodies were purified by affinity-chromatography using epitope-specific phosphopeptide. Non-phospho specific antibodies were removed by chromatography using non-phosphopeptide.
Suggested Dilutions	<p>Dilute the sample so that the expected range of concentrations fall within the detection range of this kit.</p> <p>If the expected range of concentration is unknown, a pilot test should be conducted to decide the optimal dilution ratio for your samples.</p> <p>Some PubMed article(s) citing the expression level of this target are as follows:</p> <p>Boster Bio's internal QC testing used:</p> <p>Predicted MW: 69kd</p> <p>Western blotting: 1:500~1:1000</p> <p>Immunofluorescence: 1:100~1:200</p>

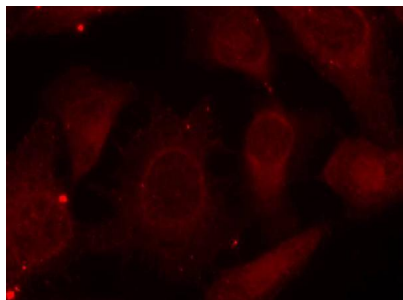
Anti-Phospho-Merlin (Ser518) NF2 Antibody (P00279-1) Images



Western blot analysis of extracts from HUVEC cells untreated (lane 1) or treated with IFN-α (lane 2) using Merlin (Phospho-Ser518) antibody P00279-1.



Western blot analysis of extracts from C6 cells, treated with calf intestinal phosphatase (CIP), using Merlin (Phospho-Ser518) antibody P00279-1.



Immunofluorescence staining of methanol-fixed Hela cells using Merlin (Phospho-Ser518) antibody P00279-1.

Submit a product review to Biocompare.com

Submit a review of this product to Biocompare.com to receive a \$20 Amazon.com giftcard! Your reviews help your fellow scientists make the right decisions. Thank you for your contribution.



Anti-Phospho-Merlin (Ser518) NF2 Antibody