

## Anti-Phospho-MEK1 (Thr386) MAP2K1 Antibody

Catalog Number: P00292-2

### About MAP2K1

MEK 1 (MAP Kinase Kinase, also known as MKK) is an integral component of the MAP kinase cascade that regulates cell growth and differentiation (Ahn, 1993; Chong et al., 2003). This pathway also plays a key role in synaptic plasticity in the brain (Adams and Sweatt, 2002). Activated MEK 1 acts as a dual specificity kinase phosphorylating both a threonine and a tyrosine residue on MAP kinase (Kyriakis et al., 1991; Seger et al., 1991; Crews et al., 1992). Conversely, there also appears to be a feedback phosphorylation of MEK 1 by MAP kinase. The sites on MEK 1 that are phosphorylated by MAP kinase are Thr-292 and Thr-386 (Mansour et al., 1994).

### Overview

Product Name	Anti-Phospho-MEK1 (Thr386) MAP2K1 Antibody
Reactive Species	Human, Rat
Description	Boster Bio Anti-Phospho-MEK1 (Thr386) MAP2K1 Antibody (Catalog # P00292-2). Tested in WB applications. This antibody reacts with Human, Rat.
Application	WB
Clonality	Polyclonal
Formulation	10 mM HEPES (pH 7.5), 150 mM NaCl, 100 µg per ml BSA and 50% glycerol.
Storage Instructions	Storage at -20°C is recommended, as aliquots may be taken without freeze/thawing due to presence of 50% glycerol. Stable for at least 1 year at -20°C. After date of receipt, stable for at least 1 year at -20°C.
Host	Rabbit
Uniprot ID	Q02750

### Technical Details

Immunogen	Synthetic phospho-peptide corresponding to amino acid residues surrounding Thr386 of human MEK1, conjugated to keyhole limpet hemocyanin (KLH). Immunogen species is Human.
Predicted Reactive Species	Bovine, Canine, Chicken, Mouse, Primate, Xenopus
Isotype	IgG
Form	Liquid
Concentration	0.5-1mg/ml, actual concentration vary by lot. Use suggested dilution ratio to decide dilution procedure.
Purification	Prepared from pooled rabbit serum by affinity purification via sequential chromatography on phospho and non-phosphopeptide affinity columns.

**Suggested Dilutions**

Dilute the sample so that the expected range of concentrations fall within the detection range of this kit.

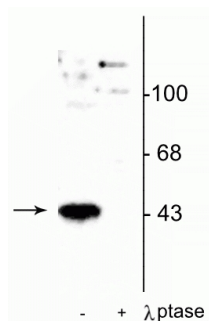
If the expected range of concentration is unknown, a pilot test should be conducted to decide the optimal dilution ratio for your samples.

Some PubMed article(s) citing the expression level of this target are as follows:

Boster Bio's internal QC testing used:

WB: 1:1000

## Anti-Phospho-MEK1 (Thr386) MAP2K1 Antibody (P00292-2) Images



Western blot of human T47D cells showing specific immunolabeling of the ~45 kDa MEK 1 protein phosphorylated at Thr<sup>386</sup> in the first lane (-). Phosphospecificity is shown in the second lane (+) where immunolabeling is completely eliminated by blot treatment with lambda phosphatase (gamma-Ptase, 1200 units for 30 min).

### Submit a product review to Biocompare.com

Submit a review of this product to Biocompare.com to receive a \$20 Amazon.com giftcard! Your reviews help your fellow scientists make the right decisions. Thank you for your contribution.



Anti-Phospho-MEK1 (Thr386) MAP2K1 Antibody