

Anti-Phospho-Beclin-1 (Ser295) BECN1 Antibody

Catalog Number: P00327-1

About BECN1

Beclin-1 plays a key role in tumor suppression and autophagy. It has been suggested that autophagy proteins such as beclin-1 can inhibit tumorigenesis and that decreased expression of these proteins may contribute to the development of human malignancies (Liang et al., 1999). Akt-mediated phosphorylation of beclin-1 at Ser-295 has been shown to decrease autophagy and promote oncogenesis (Wang et al., 2012).

Overview

Product Name	Anti-Phospho-Beclin-1 (Ser295) BECN1 Antibody
Reactive Species	Human, Mouse, Rat
Description	Boster Bio Anti-Phospho-Beclin-1 (Ser295) BECN1 Antibody (Catalog # P00327-1). Tested in WB applications. This antibody reacts with Human, Mouse, Rat.
Application	WB
Clonality	Polyclonal
Formulation	10 mM HEPES (pH 7.5), 150 mM NaCl, 100 µg per ml BSA and 50% glycerol.
Storage Instructions	Storage at -20°C is recommended, as aliquots may be taken without freeze/thawing due to presence of 50% glycerol. Stable for at least 1 year at -20°C. After date of receipt, stable for at least 1 year at -20°C.
Host	Rabbit
Uniprot ID	Q14457

Technical Details

Immunogen	Synthetic phospho-peptide corresponding to amino acid residues surrounding Ser295 of human beclin-1, conjugated to keyhole limpet hemocyanin (KLH). Immunogen species is Human.
Predicted Reactive Species	Bovine, Canine, Chicken, Human, Primate, Xenopus, Zebrafish
Isotype	IgG
Form	Liquid
Concentration	0.5-1mg/ml, actual concentration vary by lot. Use suggested dilution ratio to decide dilution procedure.
Purification	Prepared from rabbit serum by affinity purification via sequential chromatography on phospho and non-phosphopeptide affinity columns.
Suggested Dilutions	Dilute the sample so that the expected range of concentrations fall within the detection range of this

kit.

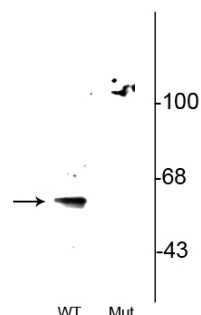
If the expected range of concentration is unknown, a pilot test should be conducted to decide the optimal dilution ratio for your samples.

Some PubMed article(s) citing the expression level of this target are as follows:

Boster Bio's internal QC testing used:

WB: 1:250

Anti-Phospho-Beclin-1 (Ser295) BECN1 Antibody (P00327-1) Images



Western blot of wild type (WT) beclin-1 expressed in HeLa cell lysate showing specific immunolabeling of beclin-1 phosphorylated at Ser²⁹⁵. This immunolabeling is eliminated in the beclin-1 alanine substitution mutant (S295A: Mut) expressed in HeLa cell lysate.

3 Publications Citing This Product

1. PubMed ID: 31900522, Song L, Yao L, Zhang L, Piao Z, Lu Y. Schizandrol A protects against Abeta1-42-induced autophagy via activation of PI3K/AKT/mTOR pathway in SH-SY5Y cells and primary hippocampal neurons. *Naunyn-Schmiedeberg's Arch Pharmacol*. 2020 Sep;393(9):1739-1752. doi:10.1007/s00
2. PubMed ID: 27293989, Recombinant Newcastle disease virus (rL-RVG) triggers autophagy and apoptosis in gastric carcinoma cells by inducing ER stress
3. PubMed ID: 29052054, Song J, Hu Y, Li J, Zheng H, Wang J, Guo L, Shi H, Liu L. *Arch Virol*. 2018 Jan;163(1):135-144. doi: 10.1007/s00705-017-3592-x. Epub 2017 Oct 19. Suppression of the toll-like receptor 7-dependent type I interferon production pathway by autophagy re...

Visit bosterbio.com/anti-phospho-beclin-1-ser295-becn1-antibody-p00327-1-boster.html to see all 3 publications.

Submit a product review to Biocompare.com

Submit a review of this product to Biocompare.com to receive a \$20 Amazon.com giftcard! Your reviews help your fellow scientists make the right decisions. Thank you for your contribution.



Anti-Phospho-Beclin-1 (Ser295) BECN1 Antibody