

Anti-Phospho-Raf-1 (Ser301) Antibody

Catalog Number: P00446

About RAF1

The Ras pathway is a critical signal transduction cascade involved in regulating cellular proliferation, differentiation, survival, and oncogenic transformation. Members of the Raf serine/threonine kinase family are key intermediates in this cascade, functioning to relay signals from activated Ras to the downstream protein kinases MEK and ERK (Marshall, 1996). Previous studies have shown that phosphorylation is required for Raf-1 activation (Dhillon and Kolch, 2002; Chong et al., 2003). Recent work has demonstrated that phosphorylation also regulates the downregulation of Raf (Dougherty et al., 2005) with two sites participating: Ser-301 and Ser-642.

Overview

Product Name	Anti-Phospho-Raf-1 (Ser301) Antibody
Reactive Species	Human, Rat
Description	Boster Bio Anti-Phospho-Raf-1 (Ser301) Antibody (Catalog # P00446). Tested in WB applications. This antibody reacts with Human, Rat.
Application	WB
Clonality	Polyclonal
Formulation	10 mM HEPES (pH 7.5), 150 mM NaCl, 100 µg per ml BSA and 50% glycerol.
Storage Instructions	Storage at -20°C is recommended, as aliquots may be taken without freeze/thawing due to presence of 50% glycerol. Stable for at least 1 year at -20°C. After date of receipt, stable for at least 1 year at -20°C.
Host	Rabbit
Uniprot ID	P11365

Technical Details

Immunogen	Synthetic phospho-peptide corresponding to amino acid residues surrounding Ser301 of rat Raf-1, conjugated to keyhole limpet hemocyanin (KLH). Immunogen species is Rat.
Predicted Reactive Species	Bovine, Canine, Chicken, Mouse, Primate, Xenopus
Isotype	IgG
Form	Liquid
Concentration	0.5-1mg/ml, actual concentration vary by lot. Use suggested dilution ratio to decide dilution procedure.
Purification	Prepared from pooled rabbit serum by affinity purification via sequential chromatography on phospho and non-phosphopeptide affinity columns.

Suggested Dilutions

Dilute the sample so that the expected range of concentrations fall within the detection range of this kit.

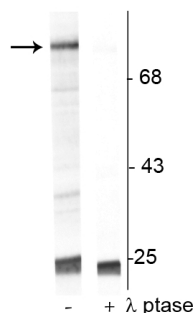
If the expected range of concentration is unknown, a pilot test should be conducted to decide the optimal dilution ratio for your samples.

Some PubMed article(s) citing the expression level of this target are as follows:

Boster Bio's internal QC testing used:

WB: 1:1000

Anti-Phospho-Raf-1 (Ser301) Antibody (P00446) Images



Western blot of UV treated human Jurkat cell lysate showing specific immunolabeling of the ~74 kDa Raf-1 protein phosphorylated at Ser³⁰¹ in the first lane (-). Phosphospecificity is shown in the second lane (+) where the immunolabeling is completely eliminated by blot treatment with lambda phosphatase (gamma-Ptase, 1200 units for 30 minutes).

Submit a product review to Biocompare.com

Submit a review of this product to Biocompare.com to receive a \$20 Amazon.com giftcard! Your reviews help your fellow scientists make the right decisions. Thank you for your contribution.



Anti-Phospho-Raf-1 (Ser301) Antibody