

Anti-Phospho-ATF2 (Ser490,498) Antibody

Catalog Number: P00916

About ATF2

The activating transcription factor ATF2 (also called CRE-BP1) binds to both AP-1 and CRE DNA response elements and is a member of the ATF/CREB family of leucine zipper proteins (Maekawa et al., 1989). ATF2 has been implicated in the transcriptional regulation of a number of genes including cytokines, cell cycle control and apoptosis. Various forms of cellular stress, including inflammatory cytokines and UV irradiation, stimulate the transcriptional activity of ATF2 (Ivanov et al., 2003; Morton et al., 2004). Stress induced ATFdependent transcription is dependent on phosphorylation of ATF (Fuchs et al., 2000; Morton et al., 2004). Serine 490 and serine 498 are novel phosphorylation sites on ATF that have recently been identified. ATF2 is particularly abundant in the brain and the ATF2 family of transcription factors is considered an important substrate of signals upstream of the activation of genes associated with neuronal growth and differentiation (Karin and Hunter, 1995). ATF expression has also been linked to the depression in humans (Laifenfeld et al., 2004).

Overview

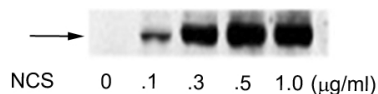
Product Name	Anti-Phospho-ATF2 (Ser490,498) Antibody
Reactive Species	Human, Mouse
Description	Boster Bio Anti-Phospho-ATF2 (Ser490, 498) Antibody (Catalog # P00916). Tested in WB, IHC, ICC applications. This antibody reacts with Human, Mouse.
Application	IHC, ICC, WB
Clonality	Polyclonal 608
Formulation	10 mM HEPES (pH 7.5), 150 mM NaCl, 100 µg per ml BSA and 50% glycerol.
Storage Instructions	Storage at -20°C is recommended, as aliquots may be taken without freeze/thawing due to presence of 50% glycerol. Stable for at least 1 year at -20°C. After date of receipt, stable for at least 1 year at -20°C.
Host	Rabbit
Uniprot ID	P15336

Technical Details

Immunogen	Synthetic phospho-peptide corresponding to amino acid residues surrounding Ser490/498 of human ATF2, conjugated to keyhole limpet hemocyanin (KLH). Immunogen species is Human.
Predicted Reactive Species	Rat
Isotype	IgG
Form	Liquid
Concentration	0.5-1mg/ml, actual concentration vary by lot. Use suggested dilution ratio to decide dilution

	procedure.
Purification	Prepared from rabbit serum by affinity purification via sequential chromatography on phospho and non-phosphopeptide affinity columns.
Suggested Dilutions	<p>Dilute the sample so that the expected range of concentrations fall within the detection range of this kit.</p> <p>If the expected range of concentration is unknown, a pilot test should be conducted to decide the optimal dilution ratio for your samples.</p> <p>Some PubMed article(s) citing the expression level of this target are as follows:</p> <p>Boster Bio's internal QC testing used:</p> <p>WB: 1:1000 IHC: 1:1000 ICC: 1:500</p>

Anti-Phospho-ATF2 (Ser490,498) Antibody (P00916) Images



Western blot of human melanoma cells incubated with varying doses of the radiomimetic drug NCS showing specific immunolabeling of the ~74 kDa ATF2 protein phosphorylated at Ser⁴⁹⁰ and Ser⁴⁹⁸.

Submit a product review to Biocompare.com

Submit a review of this product to Biocompare.com to receive a \$20 Amazon.com giftcard! Your reviews help your fellow scientists make the right decisions. Thank you for your contribution.



Anti-Phospho-ATF2 (Ser490,498) Antibody