

Anti-Phospho-POLR2A (S2) Rabbit Monoclonal Antibody

Catalog Number: P01029-1

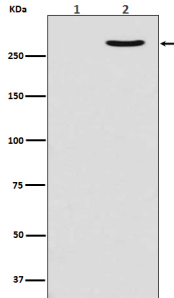
Overview

Product Name	Anti-Phospho-POLR2A (S2) Rabbit Monoclonal Antibody
Reactive Species	Human, Mouse, Rat
Description	Boster Bio Anti-Phospho-POLR2A (S2) Rabbit Monoclonal Antibody catalog # P01029-1. Tested in WB, IHC, ICC/IF, IP, Flow Cytometry applications. This antibody reacts with Human, Mouse, Rat.
Application	Flow Cytometry, IP, IF, IHC, ICC, WB
Clonality	Monoclonal AH-16
Formulation	Rabbit IgG in phosphate buffered saline, pH 7.4, 150mM NaCl, 0.02% sodium azide and 50% glycerol, 0.4-0.5mg/ml BSA.
Storage Instructions	Store at -20°C for one year. For short term storage and frequent use, store at 4°C for up to one month. Avoid repeated freeze-thaw cycles.
Host	Rabbit
Uniprot ID	P24928

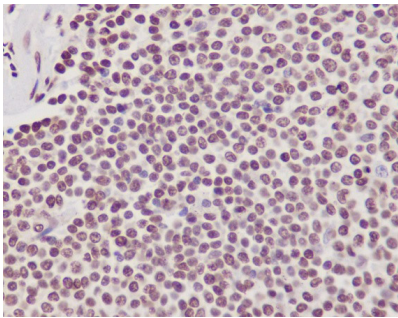
Technical Details

Immunogen	A synthesized peptide derived from human POLR2A
Isotype	Rabbit IgG
Form	Liquid
Concentration	Actual concentration vary by lot. Use suggested dilution ratio to decide dilution procedure.
Purification	Affinity-chromatography
Suggested Dilutions	<p>Dilute the sample so that the expected range of concentrations fall within the detection range of this kit.</p> <p>If the expected range of concentration is unknown, a pilot test should be conducted to decide the optimal dilution ratio for your samples.</p> <p>Some PubMed article(s) citing the expression level of this target are as follows:</p> <p>Boster Bio's internal QC testing used:</p> <p>WB 1:500-1:2000 IHC 1:50-1:200 ICC/IF 1:50-1:200 IP 1:50 FC 1:50</p>

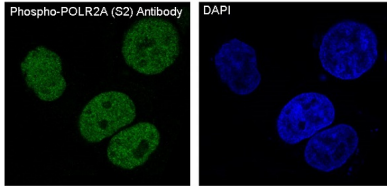
Anti-Phospho-POLR2A (S2) Rabbit Monoclonal Antibody (P01029-1) Images



Western blot analysis of Phospho-POLR2A (S2) expression in (1) MCF7 cell lysate treated with Lambda Phosphatase; (2) MCF7 cell lysate.



Immunohistochemical analysis of paraffin-embedded human spleen, using Phospho-POLR2A (S2) Antibody.



Immunofluorescent analysis of MCF7 cells, using Phospho-POLR2A (S2) Antibody .

1 Publications Citing This Product

1. PubMed ID: 28848320, Heparanase mediates vascular endothelial growth factor gene transcription in high-glucose human retinal microvascular endothelial cells.

Visit bosterbio.com/anti-phospho-polr2a-s2-rabbit-monoclonal-antibody-p01029-1-boster.html to see all 1 publications.

Submit a product review to Biocompare.com

Submit a review of this product to Biocompare.com to receive a \$20 Amazon.com giftcard! Your reviews help your fellow scientists make the right decisions. Thank you for your contribution.



Anti-Phospho-POLR2A (S2) Rabbit Monoclonal Antibody