

## Anti-Phospho-MEF2C (Ser222) Antibody

Catalog Number: P01131

### About MEF2C

MEF2C, also known as MADS box transcription enhancer factor 2, polypeptide C, is one of 4 MEF2 (myocyte enhancer factor 2) transcription factors that encode proteins for development of skeletal muscle and brain proliferation and differentiation (McDermott et al, 1993), along with regulating stress-response during cardiac hypertrophy in mammals (Wu et al, 2015). Phosphorylation of MEF2C at serine 59 has been shown to be negatively regulated by integrin-linked kinase (ILK) (Dong et al, 2015). Recently, high MEF2C expression has been associated with a subset of acute myeloid leukemia (AML) patients with adverse-risk disease features and poor outcomes (Laszlo et al, 2015). Phosphorylation of MEF2C at serine 222 may play a key role in MEF2C signaling.

### Overview

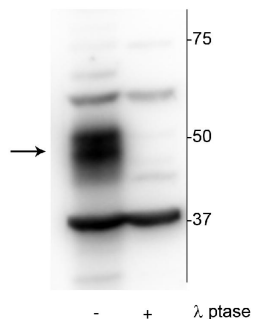
Product Name	Anti-Phospho-MEF2C (Ser222) Antibody
Reactive Species	Human
Description	Boster Bio Anti-Phospho-MEF2C (Ser222) Antibody (Catalog # P01131). Tested in WB applications. This antibody reacts with Human.
Application	WB
Clonality	Polyclonal 608
Formulation	10 mM HEPES (pH 7.5), 150 mM NaCl, 100 µg per ml BSA and 50% glycerol.
Storage Instructions	Storage at -20°C is recommended, as aliquots may be taken without freeze/thawing due to presence of 50% glycerol. Stable for at least 1 year at -20°C. After date of receipt, stable for at least 1 year at -20°C.
Host	Rabbit
Uniprot ID	Q06413

### Technical Details

Immunogen	Synthetic phospho-peptide corresponding to amino acid residues surrounding Ser222 of human MEF2C, conjugated to keyhole limpet hemocyanin (KLH). Immunogen species is Human.
Predicted Reactive Species	Bovine, Chicken, Guinea Pig, Mouse, Primate, Rat, Sheep
Cross Reactivity	No cross reactivity with other proteins.
Isotype	IgG
Form	Liquid
Concentration	0.5-1mg/ml, actual concentration vary by lot. Use suggested dilution ratio to decide dilution

	procedure.
Purification	Prepared from pooled rabbit serum by affinity purification via sequential chromatography on phospho and non-phosphopeptide affinity columns.
Suggested Dilutions	<p>Dilute the sample so that the expected range of concentrations fall within the detection range of this kit.</p> <p>If the expected range of concentration is unknown, a pilot test should be conducted to decide the optimal dilution ratio for your samples.</p> <p>Some PubMed article(s) citing the expression level of this target are as follows:</p> <p>Boster Bio's internal QC testing used:</p> <p>WB: 1:1000</p>

## Anti-Phospho-MEF2C (Ser222) Antibody (P01131) Images



Western blot of OCIAML2 lysate showing specific immunolabeling of the ~51 kDa MEF2C phosphorylated at Ser<sup>222</sup> in the first lane (-). Phosphospecificity is shown in the second lane (+) where the immunolabeling is completely eliminated by blot treatment with lambda phosphatase ((gamma-Ptase, 1200 units for 30 minutes).

### Submit a product review to Biocompare.com

Submit a review of this product to Biocompare.com to receive a \$20 Amazon.com giftcard! Your reviews help your fellow scientists make the right decisions. Thank you for your contribution.



Anti-Phospho-MEF2C (Ser222) Antibody