

## Anti-Phospho-PKCth (Ser676) PRKCQ Antibody

Catalog Number: P01293

### About PRKCQ

This is a calcium-independent, phospholipid-dependent, serine- and threonine-specific enzyme. Essential for T-cell receptor (TCR)-mediated T-cell activation, but is dispensable during TCR-dependent thymocyte development. Links the TCR signaling complex to the activation of NF-kappa-B in mature T lymphocytes. Required for interleukin-2 (IL2) production.

Kristof Van Kolen, et al. (2006) FEBS J ; 273: 1843 - 1854.  
Martin Villalba, et al. (2002) J. Cell Biol ; 157: 253.  
Jie Zhang, et al. (2004) J. Biol. Chem ; 279: 22118 - 22123.  
Castro AF, et al. (1998) Am J Physiol Cell Physiol; 275: C113 - C119.

### Overview

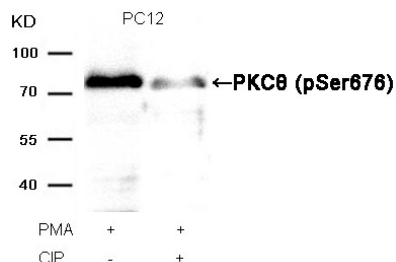
Product Name	Anti-Phospho-PKCth (Ser676) PRKCQ Antibody
Reactive Species	Human, Mouse, Rat
Description	Boster Bio Anti-Phospho-PKCth (Ser676) PRKCQ Antibody (Catalog # P01293). Tested in WB, IHC, IF applications. This antibody reacts with Human, Mouse, Rat.
Application	IF, IHC, WB
Clonality	Polyclonal
Formulation	Supplied at 1.0mg/mL in phosphate buffered saline (without Mg <sup>2+</sup> and Ca <sup>2+</sup> ), pH 7.4, 150mM NaCl, 0.02% sodium azide and 50% glycerol.
Storage Instructions	Store at -20°C for one year. For short term storage and frequent use, store at 4°C for up to one month. Avoid repeated freeze-thaw cycles.
Host	Rabbit
Uniprot ID	Q04759

### Technical Details

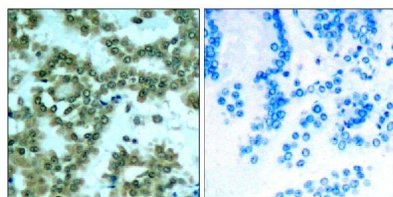
Immunogen	Peptide sequence around phosphorylation site of serine 676 (R-L-S(p)-F-A) derived from Human PKCth.
Predicted Reactive Species	Bovine, Chicken, Xenopus Laevis, Xenopus Tropicalis, Zebrafish
Cross Reactivity	No cross reactivity with other proteins.
Isotype	IgG
Form	Liquid

Concentration	1 mg/ml
Purification	Antibodies were produced by immunizing rabbits with synthetic phosphopeptide and KLH conjugates. Antibodies were purified by affinity-chromatography using epitope-specific phosphopeptide. Non-phospho specific antibodies were removed by chromatography using non-phosphopeptide.
Suggested Dilutions	<p>Dilute the sample so that the expected range of concentrations fall within the detection range of this kit.</p> <p>If the expected range of concentration is unknown, a pilot test should be conducted to decide the optimal dilution ratio for your samples.</p> <p>Some PubMed article(s) citing the expression level of this target are as follows:</p> <p>Boster Bio's internal QC testing used:</p> <p>Predicted MW: 80kd</p> <p>Western blotting: 1:500~1:1000</p> <p>Immunohistochemistry: 1:50~1:100</p> <p>Immunofluorescence: 1:100~1:200</p>

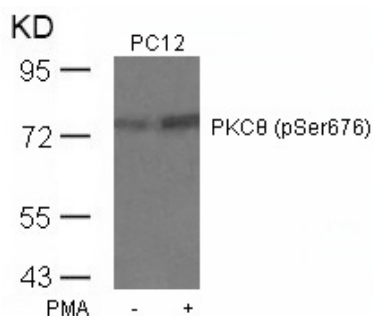
## Anti-Phospho-PKCth (Ser676) PRKCQ Antibody (P01293) Images



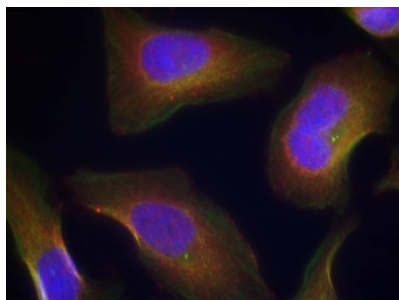
Western blot analysis of extracts from PC12 cells, treated with PMA or calf intestinal phosphatase (CIP), using PKCtheta (Phospho-Ser676) antibody P01293.



Immunohistochemical analysis of paraffin-embedded human lung carcinoma tissue using PKCth(Phospho-Ser676) antibody P01293(left) or the same antibody preincubated with blocking peptide(right).



Western blot analysis of extracts from PC12 cells untreated or treated with PMA using PKCth(Phospho-Ser676) antibody P01293.



Immunofluorescence staining of methanol-fixed Hela cells using PKCth(Phospho-Ser676) antibody P01293.

## Submit a product review to Biocompare.com

Submit a review of this product to Biocompare.com to receive a \$20 Amazon.com giftcard! Your reviews help your fellow scientists make the right decisions. Thank you for your contribution.



Anti-Phospho-PKCth (Ser676) PRKCQ Antibody