

Anti-Phospho-Elk-1 (Ser383) Antibody

Catalog Number: P01426

About ELK1

Elk-1 is a transcription factor involved in mediating gene transcription in response to growth factors (Hill and Treisman, 1995). Elk-1 is thought to be phosphorylated by MAP kinase at Ser-383 and phosphorylation at this site is essential for the transcriptional activity of Elk-1 (Li et al., 2003). Phosphorylation of Elk-1 has also been implicated in synaptic plasticity in the adult hippocampus (Thiels et al., 2002).

Overview

Product Name	Anti-Phospho-Elk-1 (Ser383) Antibody
Reactive Species	Mouse, Rat
Description	Boster Bio Anti-Phospho-Elk-1 (Ser383) Antibody (Catalog # P01426). Tested in WB applications. This antibody reacts with Mouse, Rat.
Application	WB
Clonality	Polyclonal 608
Formulation	10 mM HEPES (pH 7.5), 150 mM NaCl, 100 µg per ml BSA and 50% glycerol.
Storage Instructions	Storage at -20°C is recommended, as aliquots may be taken without freeze/thawing due to presence of 50% glycerol. Stable for at least 1 year at -20°C. After date of receipt, stable for at least 1 year at -20°C.
Host	Rabbit
Uniprot ID	P19419

Technical Details

Immunogen	Synthetic phospho-peptide corresponding to amino acid residues surrounding Ser383 of human Elk-1, conjugated to keyhole limpet hemocyanin (KLH). Immunogen species is Human.
Predicted Reactive Species	Canine, Human, Primate, Zebrafish
Cross Reactivity	No cross reactivity with other proteins.
Isotype	IgG
Form	Liquid
Concentration	0.5-1mg/ml, actual concentration vary by lot. Use suggested dilution ratio to decide dilution procedure.
Purification	Prepared from rabbit serum by affinity purification via sequential chromatography on phospho- and dephosphopeptide affinity columns.

Suggested Dilutions

Dilute the sample so that the expected range of concentrations fall within the detection range of this kit.

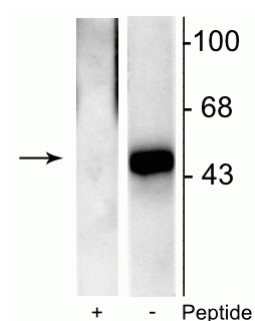
If the expected range of concentration is unknown, a pilot test should be conducted to decide the optimal dilution ratio for your samples.

Some PubMed article(s) citing the expression level of this target are as follows:

Boster Bio's internal QC testing used:

WB: 1:1000

Anti-Phospho-Elk-1 (Ser383) Antibody (P01426) Images



Western blot of recombinant Elk-1 showing specific immunolabeling of the ~46 kDa Elk-1 phosphorylated at Ser³⁸³ in the right lane (-). Phosphospecificity is shown in the left lane (+) where immunolabeling is blocked by preadsorption of the phosphopeptide used as the antigen, but not by the corresponding non-phosphopeptide (not shown).

Submit a product review to Biocompare.com

Submit a review of this product to Biocompare.com to receive a \$20 Amazon.com giftcard! Your reviews help your fellow scientists make the right decisions. Thank you for your contribution.



Anti-Phospho-Elk-1 (Ser383) Antibody