

Anti-Phospho-EphrinB (Tyr298) Antibody

Catalog Number: P01507

About EPHB2

EphrinB proteins are thought to play key roles in cellular functions as diverse as neuronal migration and blood vessel development (Flanagan and Vanceraeghen, 1998; Dufour et al., 2003; Oike et al., 2002). EphrinB molecules expressed at the membrane surface bind to the EphB family receptors on target cells during cell to cell contact. This interaction leads to cell signaling in the target cell but also generates a reverse signal in the cell expressing EphrinB on its surface. This reverse signaling event is thought to be critical for vessel maturation and neuronal development. Importantly, tyrosine phosphorylation of EphrinB is thought to be a critical component of this reverse signaling event (Palmer et al., 2002). Recent work suggests that phosphorylation of a specific EphrinB residue (Tyr-298) plays a key role in EphrinB signaling (Kalo, et al., 2001).

Overview

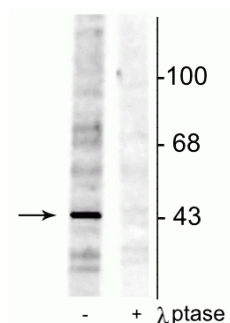
Product Name	Anti-Phospho-EphrinB (Tyr298) Antibody
Reactive Species	Human, Rat
Description	Boster Bio Anti-Phospho-EphrinB (Tyr298) Antibody (Catalog # P01507). Tested in WB applications. This antibody reacts with Human, Rat.
Application	WB
Clonality	Polyclonal 608
Formulation	10 mM HEPES (pH 7.5), 150 mM NaCl, 100 µg per ml BSA and 50% glycerol.
Storage Instructions	Storage at -20°C is recommended, as aliquots may be taken without freeze/thawing due to presence of 50% glycerol. Stable for at least 1 year at -20°C. After date of receipt, stable for at least 1 year at -20°C.
Host	Rabbit
Uniprot ID	P28693

Technical Details

Immunogen	Synthetic phosphopeptide corresponding to amino acid residues surrounding the Tyr298 of Xenopus EphrinB, conjugated to keyhole limpet hemocyanin (KLH). Note: Xenopus Tyr298 is the homolog of human, mouse and rat Tyr317 and also chicken Tyr305. Immunogen species is Xenopus.
Predicted Reactive Species	Bovine, Canine, Chicken, Mouse, Primate, Xenopus, Zebrafish
Cross Reactivity	No cross reactivity with other proteins.
Isotype	IgG
Form	Liquid

Concentration	0.5-1mg/ml, actual concentration vary by lot. Use suggested dilution ratio to decide dilution procedure.
Purification	Prepared from pooled rabbit serum by affinity purification via sequential chromatography on phospho and non-phosphopeptide affinity columns.
Suggested Dilutions	<p>Dilute the sample so that the expected range of concentrations fall within the detection range of this kit.</p> <p>If the expected range of concentration is unknown, a pilot test should be conducted to decide the optimal dilution ratio for your samples.</p> <p>Some PubMed article(s) citing the expression level of this target are as follows:</p> <p>Boster Bio's internal QC testing used:</p> <p>WB: 1:1000</p>

Anti-Phospho-EphrinB (Tyr298) Antibody (P01507) Images



Western blot of rat testes lysate showing specific immunolabeling of the ~46 kDa EphrinB phosphorylated at Tyr²⁹⁸ in the first lane (-). Phosphospecificity is shown in the second lane (+) where immunolabeling is completely eliminated by blot treatment with lambda phosphatase (gamma-Ptase, 1200 units for 30 min).

Submit a product review to Biocompare.com

Submit a review of this product to Biocompare.com to receive a \$20 Amazon.com giftcard! Your reviews help your fellow scientists make the right decisions. Thank you for your contribution.



Anti-Phospho-EphrinB (Tyr298) Antibody