

## Anti-Phospho-Ron (Ser1394) Polyclonal Antibody

Catalog Number: P01532

### About MST1R

This is a calcium-independent, phospholipid-dependent, serine- and threonine-specific enzyme. Essential for T-cell receptor (TCR)-mediated T-cell activation, but is dispensable during TCR-dependent thymocyte development. Links the TCR signaling complex to the activation of NF-kappa-B in mature T lymphocytes. Required for interleukin-2 (IL2) production.

Kristof Van Kolen, et al. (2006) FEBS J ; 273: 1843 - 1854.

Martin Villalba, et al. (2002) J. Cell Biol ; 157: 253.

Jie Zhang, et al. (2004) J. Biol. Chem ; 279: 22118 - 22123.

Castro AF, et al. (1998) Am J Physiol Cell Physiol; 275: C113 - C119.

### Overview

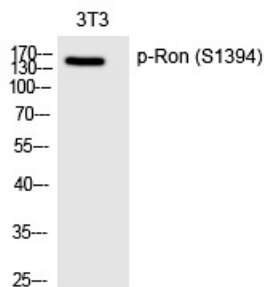
Product Name	Anti-Phospho-Ron (Ser1394) Polyclonal Antibody
Reactive Species	Human, Mouse
Description	Boster Bio Anti-Phospho-Ron (Ser1394) Polyclonal Antibody (Catalog # P01532). Tested in WB, ELISA applications. This antibody reacts with Human, Mouse.
Application	ELISA, WB
Clonality	Polyclonal
Formulation	Liquid in PBS containing 50% glycerol, 0.5% BSA and 0.02% sodium azide.
Storage Instructions	Store at -20°C for one year. For short term storage and frequent use, store at 4°C for up to one month. Avoid repeated freeze-thaw cycles.
Host	Rabbit
Uniprot ID	Q04912

### Technical Details

Immunogen	Synthesized peptide derived from human Ron around the phosphorylation site of S1394.
Predicted Reactive Species	Bovine, Chicken, Xenopus Laevis, Xenopus Tropicalis, Zebrafish
Cross Reactivity	No cross reactivity with other proteins.
Isotype	IgG
Form	Liquid
Concentration	1 mg/ml

Purification	The antibody was affinity-purified from rabbit antiserum by affinity-chromatography using epitope-specific immunogen.
Suggested Dilutions	<p>Dilute the sample so that the expected range of concentrations fall within the detection range of this kit.</p> <p>If the expected range of concentration is unknown, a pilot test should be conducted to decide the optimal dilution ratio for your samples.</p> <p>Some PubMed article(s) citing the expression level of this target are as follows:</p> <p>Boster Bio's internal QC testing used:</p> <p>Western blotting: 1/500 - 1/2000</p> <p>ELISA: 1/40000</p> <p>Not yet tested in other applications.</p>

## Anti-Phospho-Ron (Ser1394) Polyclonal Antibody (P01532) Images



Western Blot analysis of 3T3 cells using Phospho-Ron (S1394) Polyclonal antibody

### Submit a product review to Biocompare.com

Submit a review of this product to Biocompare.com to receive a \$20 Amazon.com giftcard! Your reviews help your fellow scientists make the right decisions. Thank you for your contribution.



Anti-Phospho-Ron (Ser1394) Polyclonal Antibody