

Anti-Phospho-Ribosomal Protein S6 (Ser244) Antibody

Catalog Number: P01567

About RPS6

Ribosomal protein S6 (rpS6) is a critical component of the 40 S ribosomal subunit that mediates translation initiation at the 5'-m7 GpppG cap of mRNA. The rpS6 protein is both cytoplasmic and nuclear localized (Chen and Dittmer 2011). In response to mitogenic stimuli, rpS6 undergoes ordered C-terminal phosphorylation by p70 S6 kinases and p90 ribosomal S6 kinases on four Ser residues (Ser-235, Ser-236, Ser-240, and Ser-244) whose modification potentiates rpS6 cap binding activity (Hutchinson et al., 2011). Additionally, rpS6 phosphorylation and function are highly regulated and have been implicated in the regulation of translational initiation and protein synthesis in response to extracellular stimuli such as TRAIL and gamma interferon (IFN-gamma), as well as upon activation of the phosphatidylinositol 3-kinase (PI3K)-Akt-mTOR pathway (Chen and Dittmer 2011).

Overview

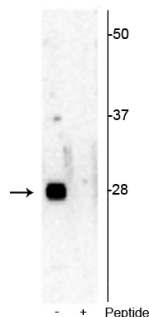
| | |
|----------------------|--|
| Product Name | Anti-Phospho-Ribosomal Protein S6 (Ser244) Antibody |
| Reactive Species | Human, Mouse |
| Description | Boster Bio Anti-Phospho-Ribosomal Protein S6 (Ser244) Antibody (Catalog # P01567). Tested in WB applications. This antibody reacts with Human, Mouse. |
| Application | WB |
| Clonality | Polyclonal 608 |
| Formulation | 10 mM HEPES (pH 7.5), 150 mM NaCl, 100 µg per ml BSA and 50% glycerol. |
| Storage Instructions | Storage at -20°C is recommended, as aliquots may be taken without freeze/thawing due to presence of 50% glycerol. Stable for at least 1 year at -20°C. After date of receipt, stable for at least 1 year at -20°C. |
| Host | Rabbit |
| Uniprot ID | P62754 |

Technical Details

| | |
|----------------------------|---|
| Immunogen | Synthetic phospho-peptide corresponding to amino acid residues surrounding Ser244 of mouse rpS6, conjugated to keyhole limpet hemocyanin (KLH). Immunogen species is Mouse. |
| Predicted Reactive Species | Chicken, Goat, Primate, Rat, Xenopus, Zebrafish |
| Cross Reactivity | No cross reactivity with other proteins. |
| Isotype | IgG |
| Form | Liquid |

| | |
|---------------------|--|
| Concentration | 0.5-1mg/ml, actual concentration vary by lot. Use suggested dilution ratio to decide dilution procedure. |
| Purification | Prepared from pooled rabbit serum by affinity purification via sequential chromatography on phospho and non-phosphopeptide affinity columns. |
| Suggested Dilutions | <p>Dilute the sample so that the expected range of concentrations fall within the detection range of this kit.</p> <p>If the expected range of concentration is unknown, a pilot test should be conducted to decide the optimal dilution ratio for your samples.</p> <p>Some PubMed article(s) citing the expression level of this target are as follows:</p> <p>Boster Bio's internal QC testing used:</p> <p>WB: 1:500</p> |

Anti-Phospho-Ribosomal Protein S6 (Ser244) Antibody (P01567) Images



Western blot of Jurkat cell lysate showing specific immunolabeling of the ~28 kDa rpS6 phosphorylated at Ser²⁴⁴ in the first lane (-). Phosphospecificity is shown in the second lane (+) where immunolabeling is blocked by preadsorption of the phosphopeptide used as antigen, but not by the corresponding non-phosphopeptide (not shown).

Submit a product review to Biocompare.com

Submit a review of this product to Biocompare.com to receive a \$20 Amazon.com giftcard! Your reviews help your fellow scientists make the right decisions. Thank you for your contribution.



Anti-Phospho-Ribosomal Protein S6 (Ser244) Antibody