

Anti-Phospho-SNAP25 (Ser187) Antibody

Catalog Number: P01625

About SNAP25

SNAP25 (Synaptosomal associated protein of 25 kDa) is a presynaptic plasma membrane protein that is widely distributed throughout the brain and involved in the regulation of neurotransmitter release. Decreased levels of SNAP25 have been found in the brains of patients with Down Syndrome and Alzheimer's Disease (Greber et al., 1999). In addition, a significant reduction in the hippocampal expression of SNAP25 has also been found in patients with Schizophrenia (Fatemi et al., 2001). Increasing evidence suggests that SNAP-25 also modulates various ion channels, including voltage gated calcium channels (VGCCs) (Pozzi et al., 2008). Activation of PKC results in the phosphorylation of SNAP-25 on Ser-187 is believed to cause inhibition of VGCC (Pozzi et al., 2008). Since Ser-187 phosphorylation is transiently induced by neuronal activity, SNAP25 creates a negative feedback mechanism for controlling neuronal excitability (Pozzi et al., 2008).

Overview

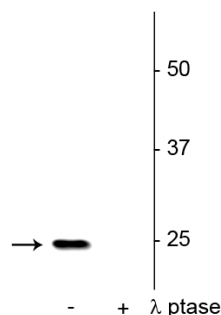
Product Name	Anti-Phospho-SNAP25 (Ser187) Antibody
Reactive Species	Mouse, Rat
Description	Boster Bio Anti-Phospho-SNAP25 (Ser187) Antibody (Catalog # P01625). Tested in WB applications. This antibody reacts with Mouse, Rat.
Application	WB
Clonality	Polyclonal 608
Formulation	10 mM HEPES (pH 7.5), 150 mM NaCl, 100 µg per ml BSA and 50% glycerol.
Storage Instructions	Storage at -20°C is recommended, as aliquots may be taken without freeze/thawing due to presence of 50% glycerol. Stable for at least 1 year at -20°C. After date of receipt, stable for at least 1 year at -20°C.
Host	Rabbit
Uniprot ID	P60881

Technical Details

Immunogen	Synthetic phospho-peptide corresponding to amino acid residues surrounding Ser187 of rat SNAP25, conjugated to keyhole limpet hemocyanin (KLH). Immunogen species is Rat.
Predicted Reactive Species	Guinea Pig, Human, Primate, Zebrafish
Cross Reactivity	No cross reactivity with other proteins.
Isotype	IgG
Form	Liquid

Concentration	0.5-1mg/ml, actual concentration vary by lot. Use suggested dilution ratio to decide dilution procedure.
Purification	Prepared from pooled rabbit serum by affinity purification via sequential chromatography on phospho and non-phosphopeptide affinity columns.
Suggested Dilutions	<p>Dilute the sample so that the expected range of concentrations fall within the detection range of this kit.</p> <p>If the expected range of concentration is unknown, a pilot test should be conducted to decide the optimal dilution ratio for your samples.</p> <p>Some PubMed article(s) citing the expression level of this target are as follows:</p> <p>Boster Bio's internal QC testing used:</p> <p>WB: 1:1000</p>

Anti-Phospho-SNAP25 (Ser187) Antibody (P01625) Images



Western blot of rat hippocampal lysate showing specific immunolabeling of the ~25 kDa SNAP25 phosphorylated at Ser¹⁸⁷ in the first lane (-). Phosphospecificity is shown in the second lane (+) where the immunolabeling is completely eliminated by lysate treatment with *lambda* phosphatase (gamma-Ptase , 400 units/100ul lysate for 30 minutes, RT).

2 Publications Citing This Product

1. PubMed ID: 32930942, Guan Y,Chen X,Zhao B,Shi Y,Han F.What Happened in the Hippocampal Axon in a Rat Model of Posttraumatic Stress Disorder.Cell Mol Neurobiol.2020 Sep 15.doi:10.1007/s10571-020-00960-w.Epub ahead of print.PMID:32930942.
2. PubMed ID: 28761431, Zhong ZQ, Xiang Y, Hu X, Wang YC, Zeng X, Wang XM, Xia QJ, Wang TH, Zhang X. Neural Regen Res. 2017 Jun;12(6):969-976. doi: 10.4103/1673-5374.208592. Synaptosomal-associated protein 25 may be an intervention target for improving sensory and locom...

Visit bosterbio.com/anti-snap25-ser187-antibody-phospho-specific-p01625-boster.html to see all 2 publications.

Submit a product review to Biocompare.com

Submit a review of this product to Biocompare.com to receive a \$20 Amazon.com giftcard! Your reviews help your fellow scientists make the right decisions. Thank you for your contribution.



Anti-Phospho-SNAP25 (Ser187) Antibody