

## Anti-Phospho NCoA2 (Ser736) Antibody

Catalog Number: P01706

### Overview

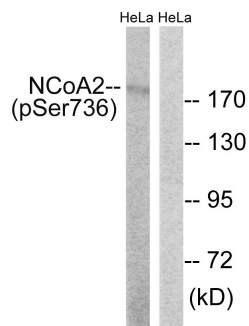
|                      |   |
|----------------------|---|
| Product Name         | Anti-Phospho NCoA2 (Ser736) Antibody  |
| Reactive Species     | Human, Mouse, Rat   |
| Description          | Boster Bio Anti-Phospho NCoA2 (Ser736) Antibody (Catalog# P01706). Tested in WB, IHC-P, IF (paraffin), ELISA applications. This antibody reacts with Human, Rat, Mouse. |
| Application          | ELISA, IHC-P, WB, IF (paraffin)   |
| Clonality            | Polyclonal CA-20  |
| Formulation          | PBS containing 50% glycerol, 0.5% BSA and 0.02% sodium azide.   |
| Storage Instructions | Store at -20°C for one year. For short-term storage and frequent use, store at 4°C for up to one month. Avoid repeated freeze-thaw cycles.                              |
| Host                 | Rabbit  |
| Uniprot ID           | Q15596  |

### Technical Details

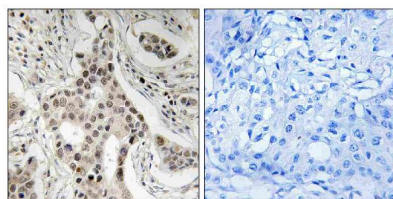
|                            |   |
|----------------------------|---|
| Immunogen                  | A peptide derived from human NCoA2 around the phosphorylation site of Ser736. Immunogen sequence location: 702-751  |
| Predicted Reactive Species | Bovine, Canine, Chicken, Primate, Sheep, Xenopus, Zebrafish   |
| Isotype                    | Rabbit IgG  |
| Form                       | Liquid  |
| Concentration              | 0.5-1mg/ml, actual concentration vary by lot. Use suggested dilution ratio to decide dilution procedure.  |
| Purification               | The antibody was purified from rabbit antiserum by affinity-chromatography using phospho peptide. The antibody against non-phospho peptide was removed by chromatography using corresponding non-phospho peptide.   |
| Suggested Dilutions        | <p>Dilute the sample so that the expected range of concentrations fall within the detection range of this kit.</p> <p>If the expected range of concentration is unknown, a pilot test should be conducted to decide the optimal dilution ratio for your samples.</p> <p>Some PubMed article(s) citing the expression level of this target are as follows:</p> <p>Boster Bio's internal QC testing used:</p> <p>Western Blot, 1:500 - 1:2000</p> <p>Immunohistochemistry, 1:100 - 1:300</p> <p>ELISA, 1:5000</p> |

|  |                                       |
|--|---------------------------------------|
|  | Not yet tested in other applications. |
|--|---------------------------------------|

## Anti-Phospho NCoA2 (Ser736) Antibody (P01706) Images



Western blot analysis of lysates from HeLa cells treated with TSA 400nM 24H, using NCoA2 (Phospho-Ser736) Antibody. The lane on the right is blocked with the phospho peptide.



Immunohistochemistry analysis of paraffin-embedded human breast carcinoma, using NCoA2 (Phospho-Ser736) Antibody. The picture on the right is blocked with the phospho peptide.

## Submit a product review to Biocompare.com

Submit a review of this product to Biocompare.com to receive a \$20 Amazon.com giftcard! Your reviews help your fellow scientists make the right decisions. Thank you for your contribution.



Anti-Phospho NCoA2 (Ser736) Antibody