

Anti-Phospho-MEF-2D (Ser444) Antibody

Catalog Number: P01799

About MEF2D

This is a calcium-independent, phospholipid-dependent, serine- and threonine-specific enzyme. Essential for T-cell receptor (TCR)-mediated T-cell activation, but is dispensable during TCR-dependent thymocyte development. Links the TCR signaling complex to the activation of NF-kappa-B in mature T lymphocytes. Required for interleukin-2 (IL2) production.

Kristof Van Kolen, et al. (2006) FEBS J ; 273: 1843 - 1854.
Martin Villalba, et al. (2002) J. Cell Biol ; 157: 253.
Jie Zhang, et al. (2004) J. Biol. Chem ; 279: 22118 - 22123.
Castro AF, et al. (1998) Am J Physiol Cell Physiol; 275: C113 - C119.

Overview

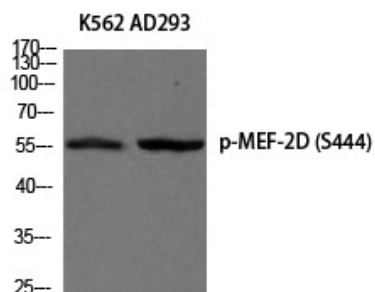
Product Name	Anti-Phospho-MEF-2D (Ser444) Antibody
Reactive Species	Human, Mouse, Rat
Description	Boster Bio Anti-Phospho-MEF-2D (Ser444) Antibody (Catalog # P01799). Tested in WB, IHC, ELISA applications. This antibody reacts with Human, Mouse, Rat.
Application	ELISA, IHC, WB
Clonality	Polyclonal
Formulation	Liquid in PBS containing 50% glycerol, 0.5% BSA and 0.02% sodium azide.
Storage Instructions	Store at -20°C for one year. For short term storage and frequent use, store at 4°C for up to one month. Avoid repeated freeze-thaw cycles.
Host	Rabbit
Uniprot ID	Q14814

Technical Details

Immunogen	Synthesized peptide derived from human MEF-2D around the phosphorylation site of S444.
Predicted Reactive Species	Bovine, Chicken, Xenopus Laevis, Xenopus Tropicalis, Zebrafish
Cross Reactivity	No cross reactivity with other proteins.
Isotype	IgG
Form	Liquid
Concentration	1 mg/ml

Purification	The antibody was affinity-purified from rabbit antiserum by affinity-chromatography using epitope-specific immunogen.
Suggested Dilutions	<p>Dilute the sample so that the expected range of concentrations fall within the detection range of this kit.</p> <p>If the expected range of concentration is unknown, a pilot test should be conducted to decide the optimal dilution ratio for your samples.</p> <p>Some PubMed article(s) citing the expression level of this target are as follows:</p> <p>Boster Bio's internal QC testing used:</p> <p>Western blotting: 1/500 - 1/2000</p> <p>Immunohistochemistry: 1/100 - 1/300</p> <p>ELISA: 1/10000</p> <p>Not yet tested in other applications.</p>

Anti-Phospho-MEF-2D (Ser444) Antibody (P01799) Images



Western blot analysis of K562 AD293 using Phospho-MEF-2D (S444) antibody.

Submit a product review to Biocompare.com

Submit a review of this product to Biocompare.com to receive a \$20 Amazon.com giftcard! Your reviews help your fellow scientists make the right decisions. Thank you for your contribution.



Anti-Phospho-MEF-2D (Ser444) Antibody